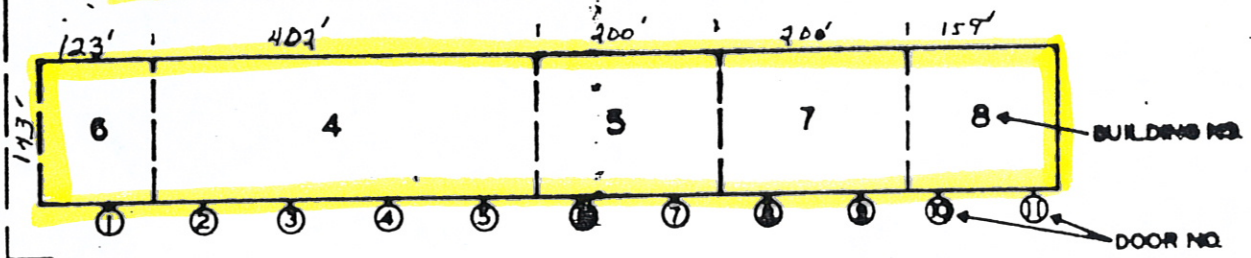


KMI Sales, Inc. (GP-A) is located at 278 Koch Street, Pekin, Illinois, 61555. This site is in the Township of Cincinnati, the County of Tazewell, and the State of Illinois.

KMI Sales, Inc. has 250,612 sq. ft. of warehouse space in seven (7) buildings. These buildings will all be included as part of GP-A. Descriptions of the facilities are as follows:

TRANSFER TO ITI MOSSVILLE (BLDG 4-8) 155,012 SQ FT

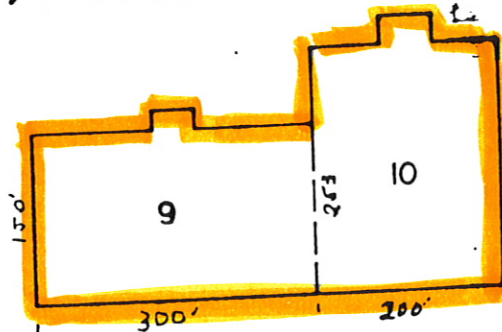


- Building: #4 - 143' X 402'
 #5 - 143' X 200'
 #6 - 143' X 123'
 #7 - 143' X 200'
 #8 - 143' X 159'

Capacity: #4, #5, #6, #7 and #8 155,012 sq. ft.

TO BE RETAINED BY KMI

BLDG 9-10 95,600 SQ FT



- Building: #9 - 150' X 300'
 #10 - 200' X 253'

Capacity: #9 and #10 95,600 sq. ft.

Total 250,612 sq. ft.

KOCH STREET