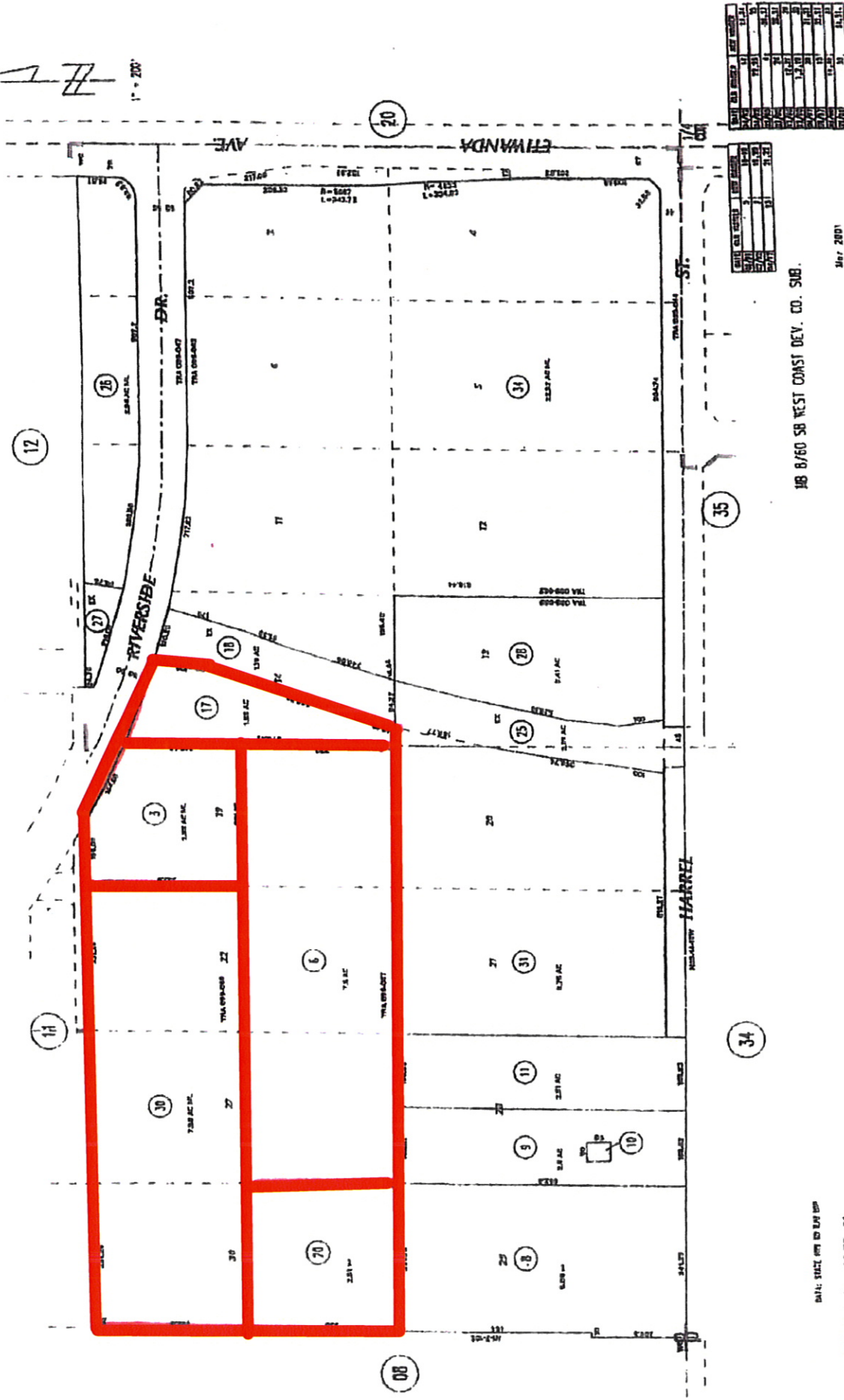


15 09
150-20

T.S.A
099-069
099-047
099-062
099-067

POR. N. 8 T. 2S., R. 6W

THIS MAP WAS PREPARED FOR ASSESSMENT PURPOSES ONLY. NO LIABILITY IS ASSURED FOR THE DATA SHOWN. ASSESSOR'S PARCELS MAY NOT CORRELATE WITH LOCAL LOT-SPLIT OR BUILDING SITE ORDINANCES.



JB 8/60 SB WEST COAST DEV. CO. SUB.

Mar 2001

DATE: 11/21/09 BY: LHM/SP

ASSESSOR'S MAP BK. 156 PG. 09
Riverside County, Calif 0200

Kwikset Corporation's Parcels (Drawing No. 2) within Site 20 Original Map
Approved on May 11, 2004, Board Order No. 1331