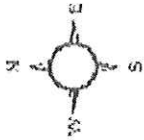
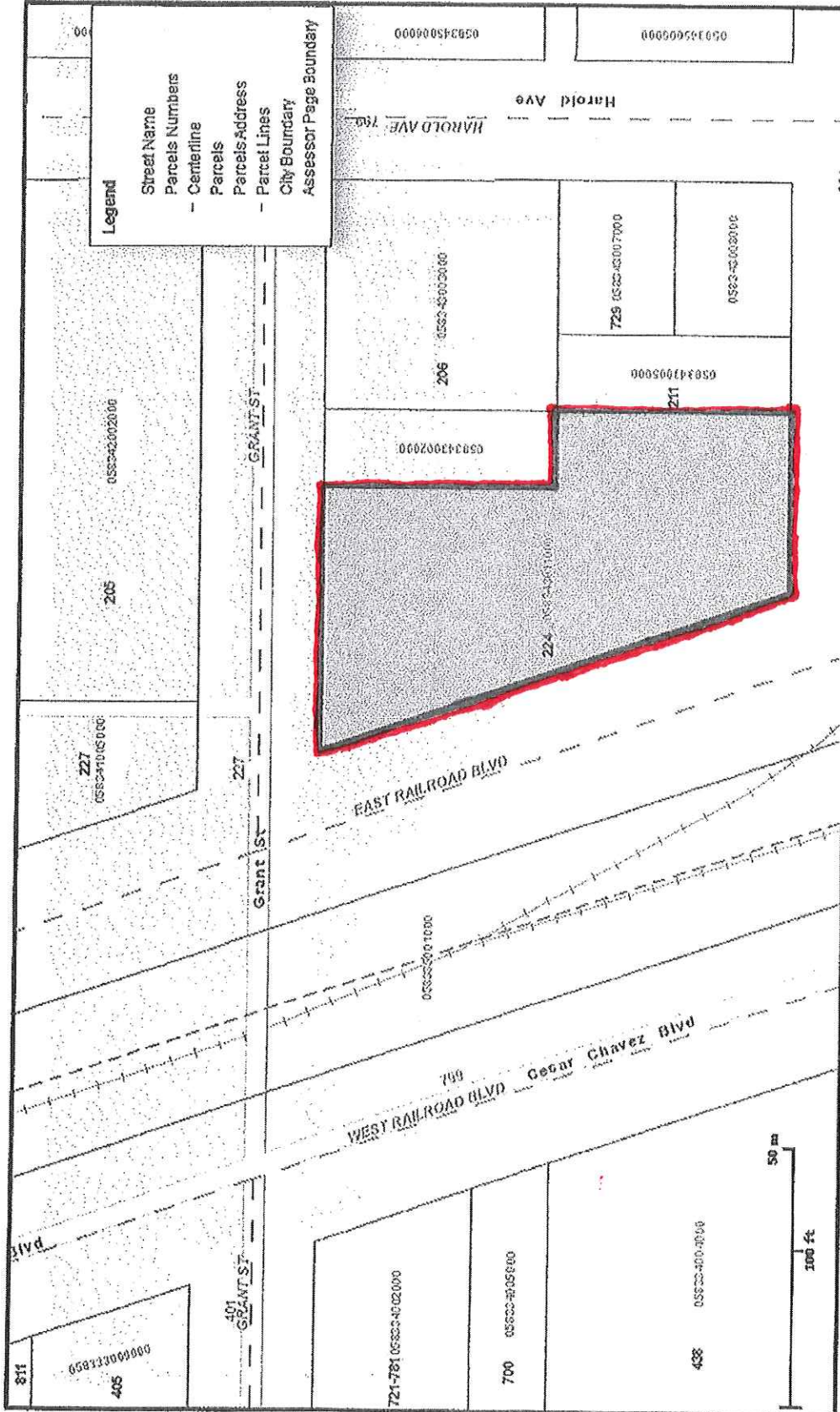


Site Map of Proposed Site 16- 224 Grant St. Showing Existing and Planned Structures



03/25/2015

Sub Title

1" = 94 ft

This map represents a visual display of related geographic information. Data provided hereon is not a guarantee of actual field conditions. To be sure of complete accuracy, please contact Imperial County staff for the most up-to-date information.