

358,673  
SF

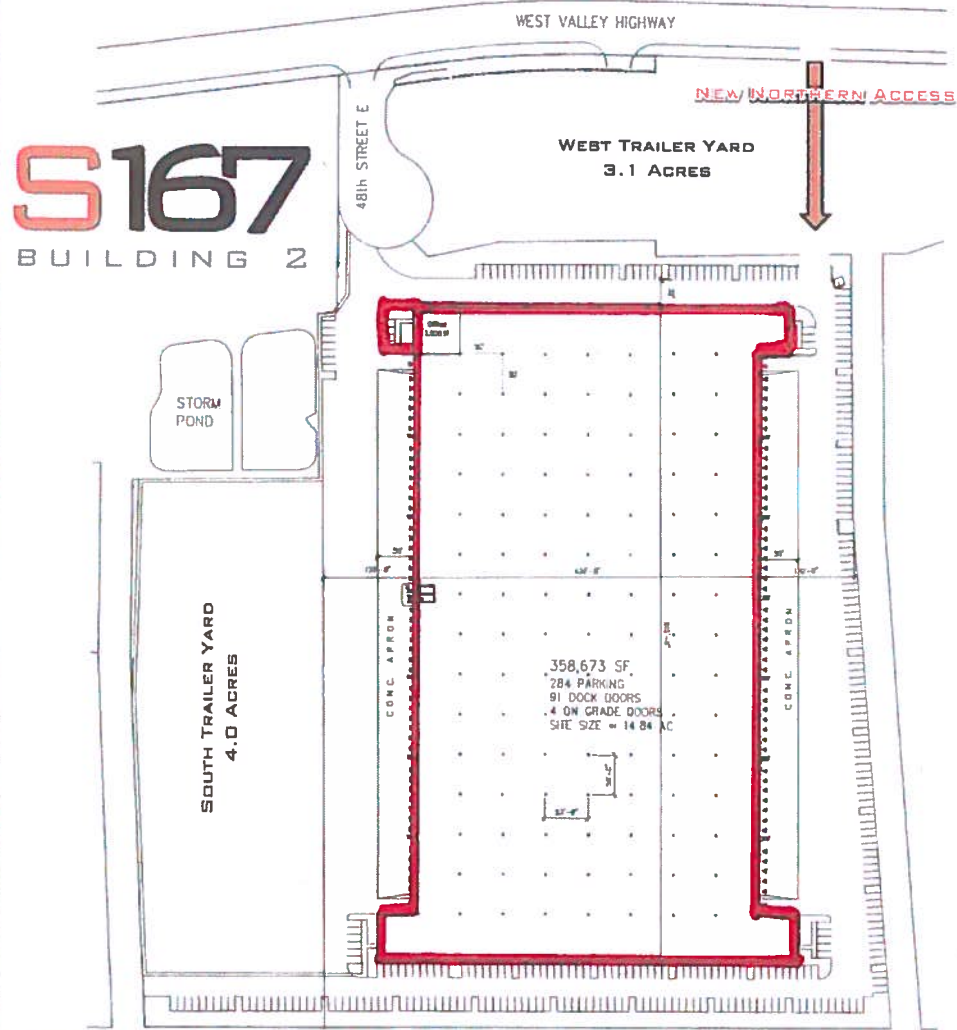
FOR LEASE

13515 48<sup>TH</sup>  
STREET E  
SUMNER,  
WASHINGTON

WWW.  
SUMNER167  
.COM

CBRE

# SUMNER ONE SIXTY SEVEN LOGISTICS CENTER



## FOR MORE INFORMATION PLEASE CONTACT

**MATT O'BRIEN**  
FIRST VICE PRESIDENT  
+1 206 442 2740  
MATT.OBRIEN@CBRE.COM

**JOHN SULLIVAN**  
VICE PRESIDENT  
+1 206 442 2744  
JOHN.SULLIVAN@CBRE.COM

**JOHN GILLILAND**  
VICE PRESIDENT  
+1 206 442 2745  
JOHN.GILLILAND@CBRE.COM

358,673  
SF

FOR LEASE

# SUMNER ONE SIXTY SEVEN LOGISTICS CENTER



STATE OF THE ART DISTRIBUTION CENTER

### FEATURES:

- DIVISIBLE TO ±175,000 SF
- 250+ TRAILER SPACES
- 30' CLEAR HEIGHT
- 2,000-AMP, 3 PH. POWER
- 50' X 50' COLUMN SPACING
- FULL CANOPIES
- ESFR SPRINKLERS
- T-5 LIGHTING
- FULLY-FENCED PREMISES
- ZONED M-1 (LT INDUSTRIAL)
- 3,000 SF OFFICE + BTS
- TOTAL 7.1 ACRES OF YARD
- 91 DOCK-HIGH DOORS
- PROPERTY REBRANDING UNDERWAY
- 4 DRIVE-IN DOORS
- 50' CONCRETE APRON

## S167

BUILDING 2

13515 48<sup>TH</sup>  
STREET E  
SUMNER,  
WASHINGTON

WWW.  
SUMNER167  
.COM

CBRE



FOR MORE INFORMATION PLEASE CONTACT

**MATT O'BRIEN**  
FIRST VICE PRESIDENT  
+1 206 442 2740  
MATT.OBRIEN@CBRE.COM

**JOHN SULLIVAN**  
VICE PRESIDENT  
+1 206 442 2744  
JOHN.SULLIVAN@CBRE.COM

**JOHN GILLILAND**  
VICE PRESIDENT  
+1 206 442 2745  
JOHN.GILLILAND@CBRE.COM

# Sumner One Sixty Seven, Building 2 13515 48th St E



Google  
gle, Imagery ©2014, DigitalGlobe, U.S. Geological Survey, USDA Farm Service Agency

© 2014 CBRE Limited. Data © TeleAtlas, Google, AerialPhotos, DigitalGlobe, Landstar, USGS, iStock. The information contained herein (the "Information") is intended for informational purposes only and should not be relied upon by recipients hereof. Although the information is believed to be correct, its accuracy, completeness or timeliness cannot be guaranteed and has not been verified by either CBRE Limited or any of its affiliates (CBRE Limited and its affiliates are collectively referred to herein as "CBRE"). CBRE neither guarantees, warrants nor assumes any responsibility or liability of any kind with respect to the accuracy, completeness, or suitability of, or reliance based upon or in connection with, the information. The recipient of the information should take such steps as the recipient may deem appropriate with respect to using the information. The information may change and any property described herein may be withdrawn from the market at any time without notice or obligation of any kind on the part of CBRE. The information is protected by copyright and shall be fully enforced.

