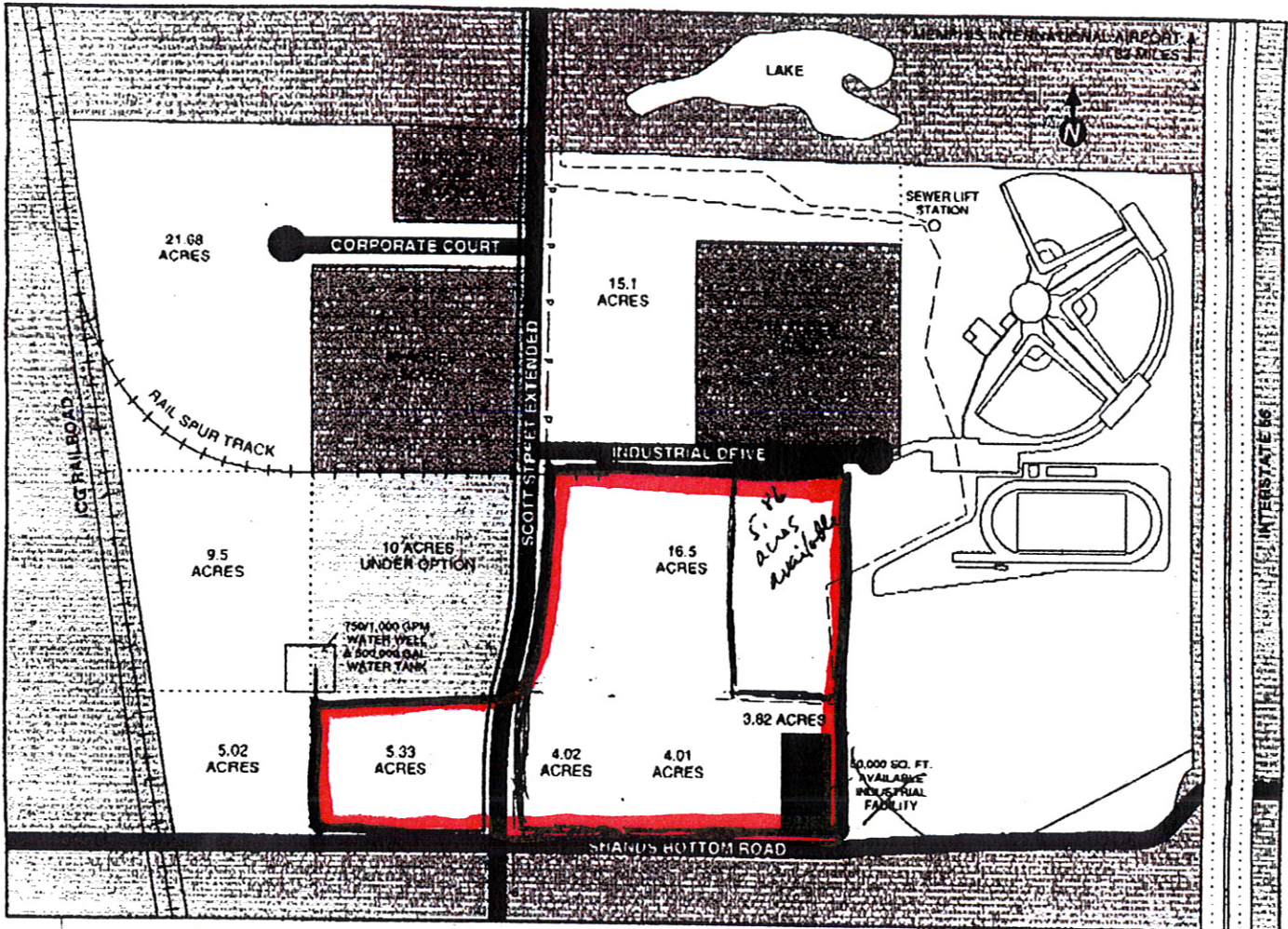


SENATOBIA INDUSTRIAL PARK

TATE COUNTY, MISSISSIPPI



- available acreage
- P — P — P — P — P — overhead 3-phase power
- 12" water main
- 10" sanitary sewer
- - - - - 6" force main from sewer lift station
- + + + + + railroad
- ▬ paved road
- ▭ interstate

Total acres in park (including roads): 181.65

55