

DESIGNED BY: J.E. GREINER COMPANY INC.
 CHECKED BY: YEM
 IN CHARGE: JLH
 TAMPA, FLORIDA

DATE: 8-17-70
 SCALE: 1" = 100'

LEASE PLOT
 (EASTERN, NORTHWEST & NATIONAL)

CITY OF TAMPA, FLORIDA
 HILLSBOROUGH COUNTY AVIATION AUTHORITY
 TAMPA INTERNATIONAL AIRPORT

EXHIBIT "A"
 (STORAGE AND LOADING AREA)

LEGEND

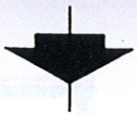
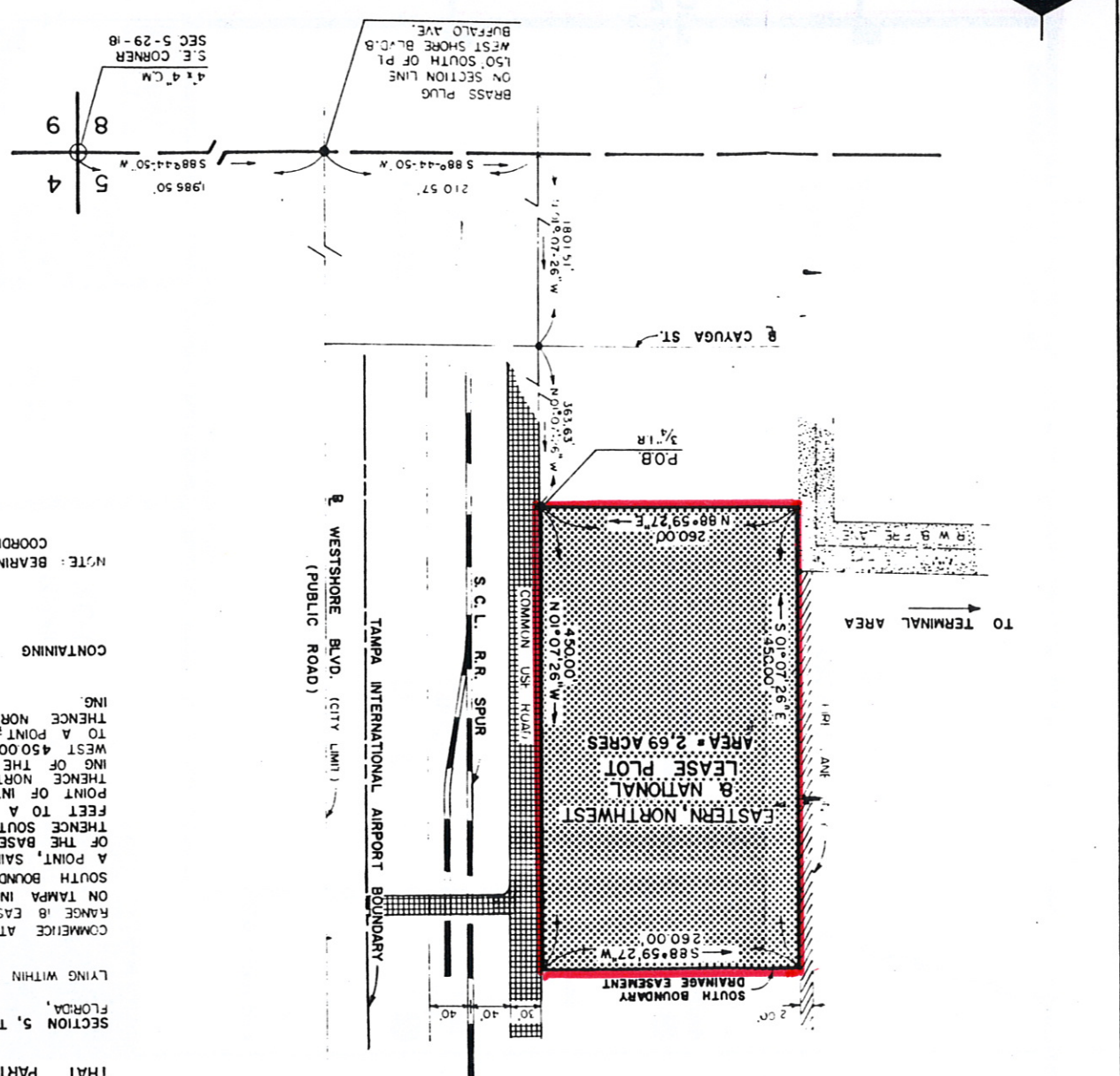
- LEASED PREMISES
- COMMON ROAD R/W
- B FIRE LANE
- FIRE LANE ONLY

NOTE: BEARINGS ARE BASED ON TAMPA INTERNATIONAL AIRPORT LOCAL GRID COORDINATE SYSTEM.

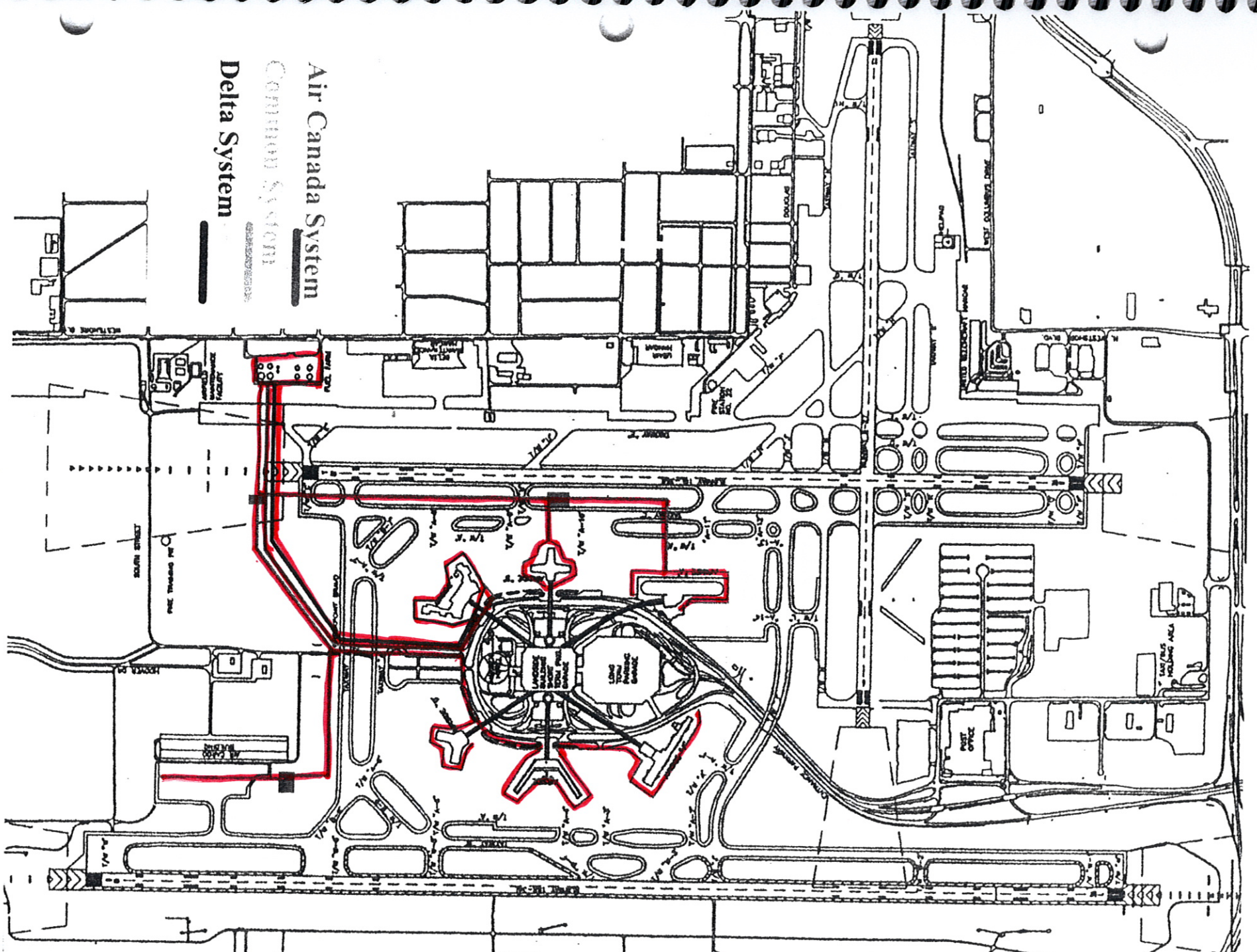
CONTAINING 2.69 ACRES, MORE OR LESS

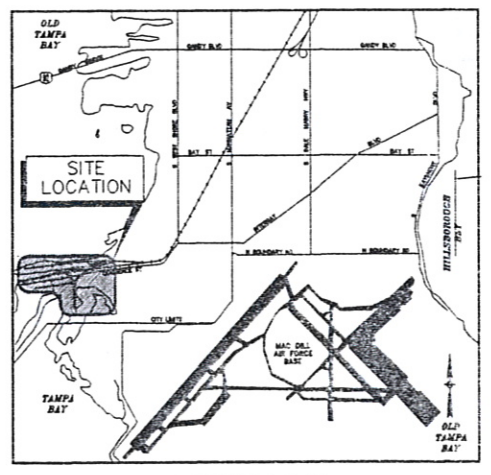
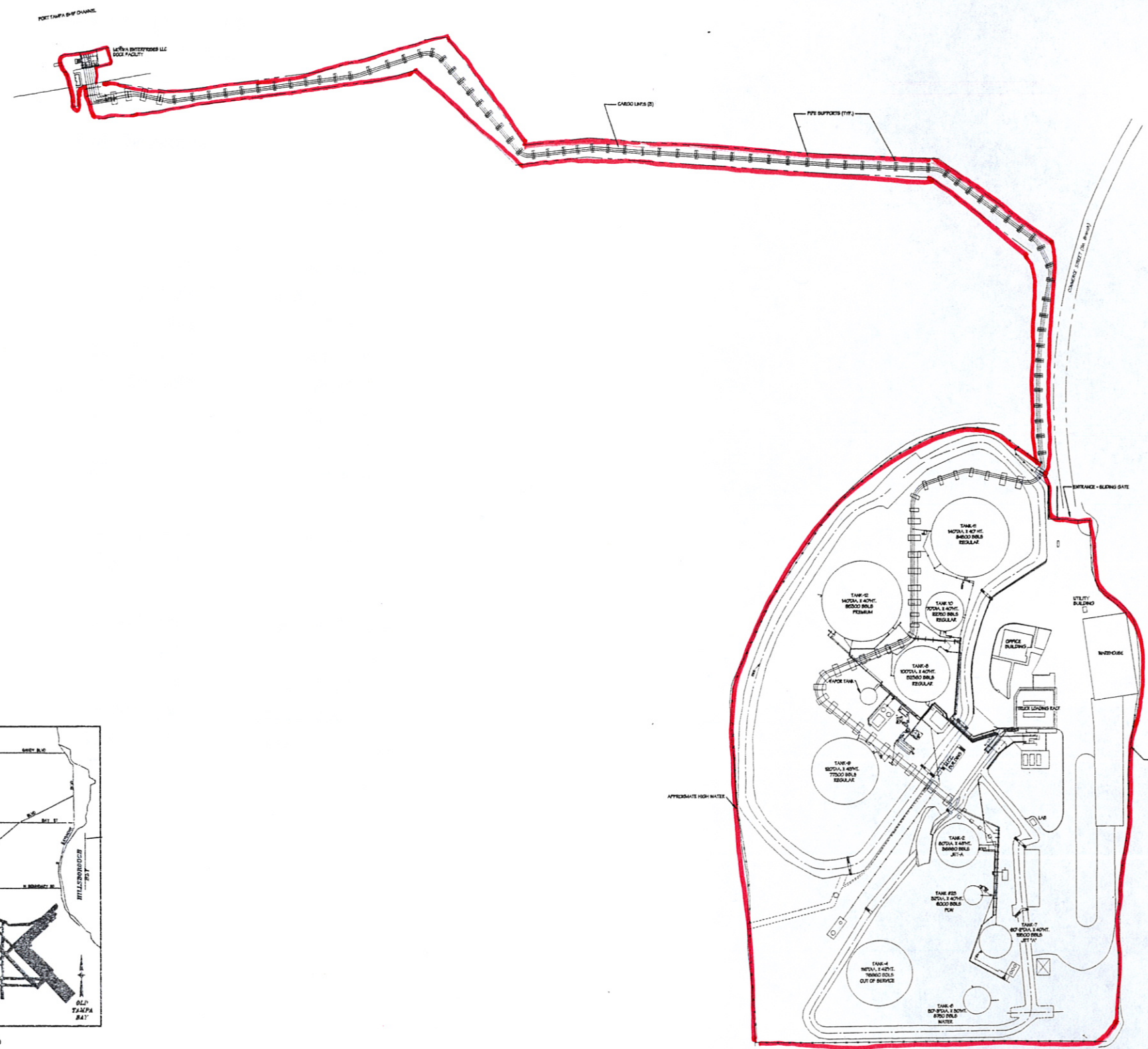
COMMENCE AT THE SOUTHEAST CORNER OF SECTION 5, TOWNSHIP 29 SOUTH, RANGE 18 EAST; RUN THENCE SOUTH 88°44'50" WEST (BEARINGS ARE BASED ON TAMPA INTERNATIONAL AIRPORT LOCAL GRID COORDINATE SYSTEM), ALONG THE SOUTH BOUNDARY OF SAID SECTION 5, A DISTANCE OF 1986.50 FEET TO A POINT, SAID POINT LYING 150 FEET SOUTH OF THE POINT OF INTERSECTION OF THE BASE LINES OF WEST SHORE BLVD. AND BUFFALO AVE.; CONTINUE THENCE SOUTH 88°44'50" WEST ALONG SAID SOUTH BOUNDARY, 2,015.7 FEET TO A POINT; THENCE NORTH 01°07'26" WEST 180.51 FEET TO A POINT OF INTERSECTION WITH THE BASE LINE OF CAYUGA STREET; CONTINUE THENCE NORTH 01°07'26" WEST 363.63 FEET TO THE POINT OF BEGINNING OF THE HEREIN DESCRIBED PARCEL; CONTINUE THENCE NORTH 01°07'26" WEST 450.00 FEET TO A POINT; THENCE SOUTH 88°59'27" WEST 260.00 FEET TO A POINT; THENCE SOUTH 01°07'26" EAST 450.00 FEET TO A POINT; THENCE NORTH 88°59'27" EAST 260.00 FEET TO THE POINT OF BEGINNING.

REVISION	BY	DATE	JOB NO.
AREA & DIMENSION CHANGE	G.M.H.	8-19-70	6455-7200
REVISED DIMENSIONS	A.J.M.	5-16-71	




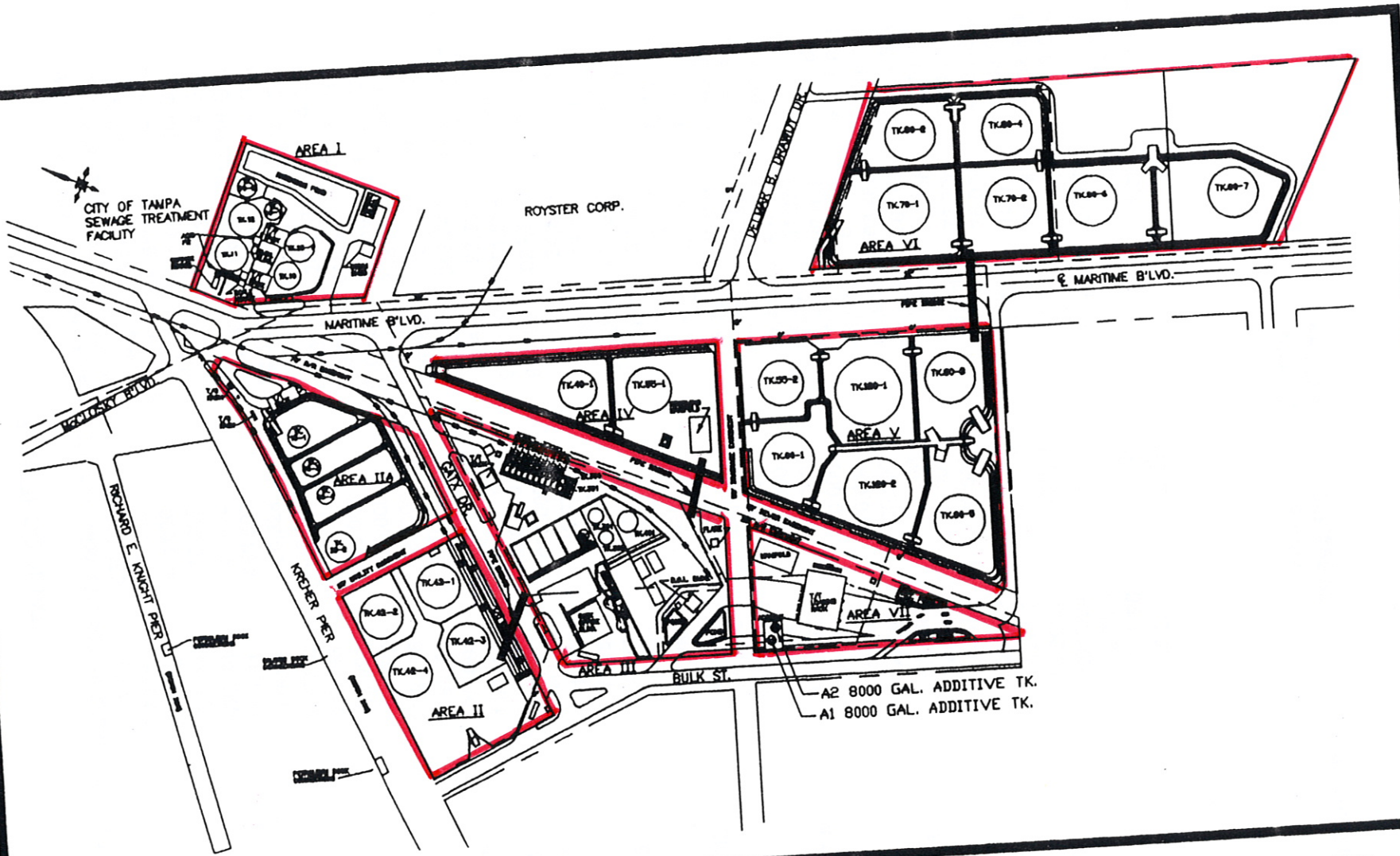
Air Canada System
Common System
Delta System





VICINITY MAP

PROJECT TITLE: TAMPA TERMINAL GENERAL ARRANGEMENT		PREPARED FOR: MOTIVA LUMINA ENTERPRISES LLC GULF COAST AREA PORT TAMPA TERMINAL	PROJECT NO.
ACAD FILE: D:\0006.DWG			DRAWN BY: CBD
CHECK'D BY:		SCALE: 1"=100'-0"	DATE: 10/20/98
REVISION: 0		DWG. NO. D-X-0006	
CONSULTANT:  CWS ENGINEERING, INC.		SEAL	
REVISIONS:		DATE:	
NO.		THIS DRAWING OR TRACING IS THE PROPERTY OF MOTIVA. REPRODUCTIONS, REPEATS OR TRANSMISSIONS MAY NOT BE MADE WITHOUT WRITTEN CONSENT. ALL PATENT RIGHTS ARE RESERVED.	



A2 8000 GAL. ADDITIVE TK.
A1 8000 GAL. ADDITIVE TK.

THIS DRAWING OR TRACING IS THE PROPERTY OF THE GATX TERMINALS CORPORATION AND MUST BE RETURNED UPON REQUEST. REPRODUCTIONS OF THIS INFORMATION HEREON MAY NOT BE MADE WITHOUT WRITTEN CONSENT. ALL PATENT RIGHTS ARE RESERVED.

PLOT DATE 1/20/92

FILE PATH GATX\DOC
FILE NAME TPA-A
PLOT SCALE 1
C.D. NO. N/A
DWG. BY RTN
DWG. DATE 1/2/92



GATX TERMINALS CORPORATION
TAMPA TERMINAL

GENERAL ARRANGEMENT
PLAN
JANUARY 1992

DRAWING NO. 00 77-00A

REVISION NO.