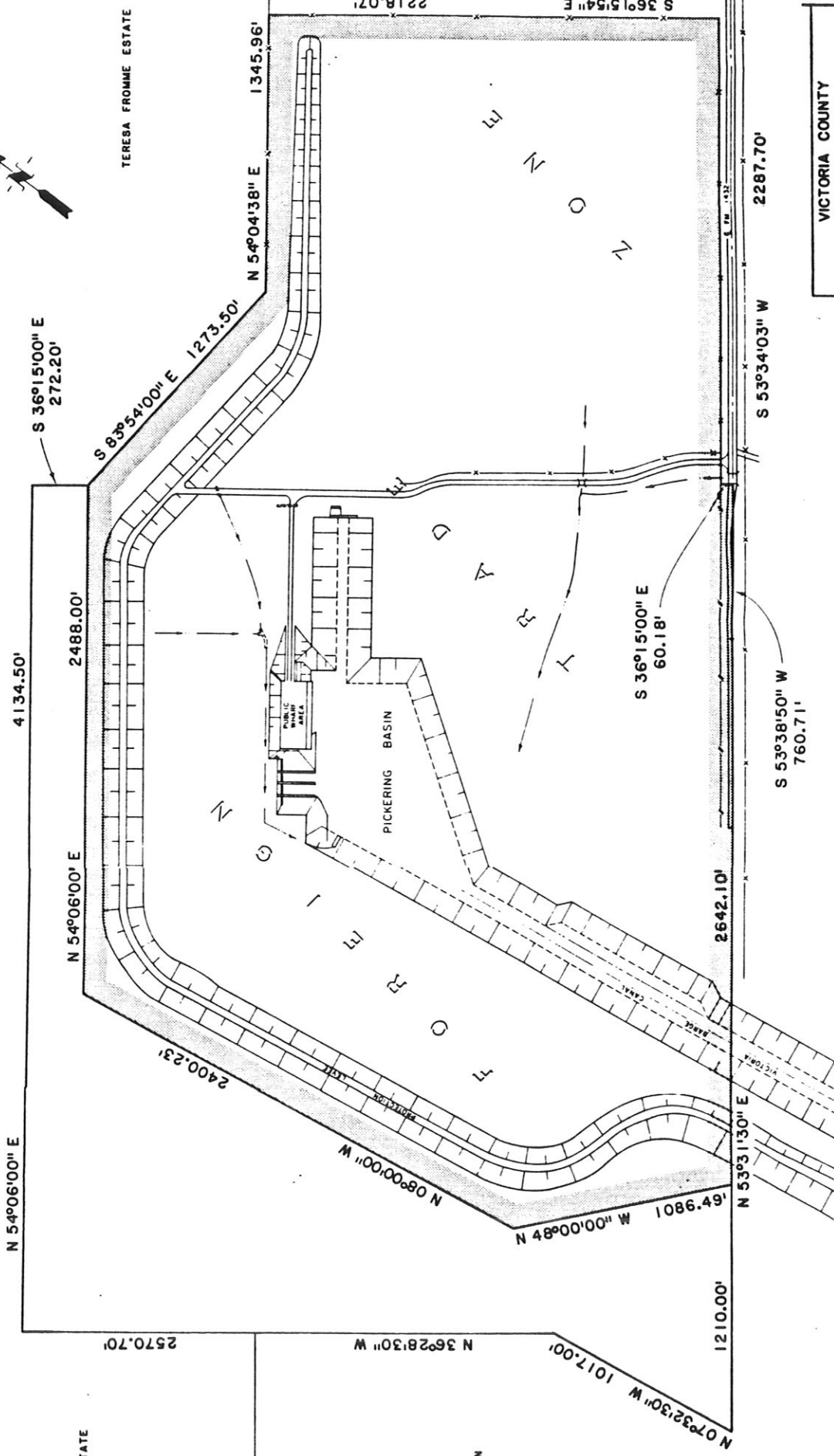


TERESA FROMME ESTATE



TERESA FROMME ESTATE

W. L. LIPSCOMB & SON

E. I. DUPONT DE NEMOURS

VICTORIA COUNTY NAVIGATION DISTRICT	
FOREIGN TRADE ZONE	
AE Associated Engineers & Surveyors	
DESIGNED BY: E.S.H.	SCALE: 1" = 300'
DRAWN BY: C.W.E.	DATE: FEB. 1967
APPROVED BY: J.H.M.	V.I. 001