

MAP OF TERRITORY TO BE ANNEXED TO THE CITY OF MASSILLON, OHIO STARK COUNTY, OHIO

PART OF SOUTHWEST QUARTER, SECTION 28, PERRY TOWNSHIP, STARK CO. 11.740 ACRES

TOTAL AREA IN ANNEXATION 0.0 MILES

MILES OF STATE HIGHWAYS 0.1 MILES

MILES OF COUNTY ROADS 0.1 MILES

MILES OF TOWNSHIP ROADS 0.0 MILES

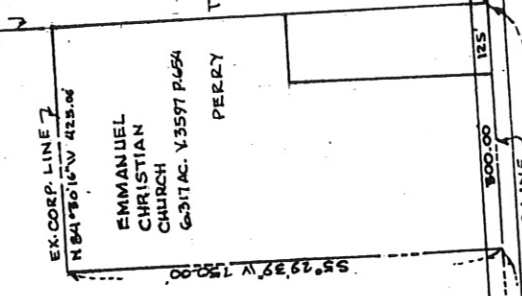
REFERENCES
 DEED VOL. 3347 PG. 287 & VOL. 3620 PG. 383
 HAVE -ERIE AREA ANNEX P.B. 52 PG. 157-160

0 100 200 300 400
 SCALE 1"=200'

JULY, 1988
 DR. BY R.F. WAGONER
 I HEREBY CERTIFY THAT THIS IS A TRUE DESCRIPTION

← EXISTING FT2
 CITY OF MASSILLON

O.L. 569
 O.R. 137.725
 N. HIMMEL
 259.129 AC.



SIBILA & SIBILA
 11.226 AC.
 VOL. 3620 PG. 383

ROAD
 N 84° 30' 16" W 600.00'
 L.E. MILLER
 V. 3875 P. 111
 100.61 AC.

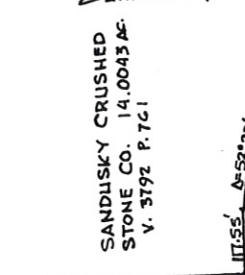
CITY LOT NUMBERS ASSIGNED THIS ___ DAY OF ___ 198
 CITY ENGINEER

STARK COUNTY ALPITOR
 ENTERED FOR TRANSFER THIS ___ DAY OF ___ 198

STARK COUNTY RECORDED:
 RECEIVED FOR RECORD THIS ___ DAY OF ___ 198
 RECORDED IN VOL. ___ PAGE ___ THIS ___ DAY OF ___ 198

STARK COUNTY COMMISSIONERS
 PASSED THIS ___ DAY OF ___ 198

STARK COUNTY COMMISSIONERS
 RECEIVED FOR ANNEXATION BY THE STARK COUNTY COMMISSIONERS
 RESOLUTION NO. ___ ADOPTED THIS ___ DAY OF ___ 198



SANDUSKY CRUSHED STONE CO. 14.0043 AC. V. 3792 P. 7C1

84 LUMBER
 15.57 - 0.8117 = 14.7583 AC.
 V. 3197 P. 255

SE. OR, SEC. 29

NE. OR. SEC. 32

STARK COUNTY COMMISSIONERS
 RECEIVED FOR ANNEXATION BY THE STARK COUNTY COMMISSIONERS
 RESOLUTION NO. ___ ADOPTED THIS ___ DAY OF ___ 198

STARK COUNTY COMMISSIONERS
 RECEIVED FOR ANNEXATION BY THE STARK COUNTY COMMISSIONERS
 RESOLUTION NO. ___ ADOPTED THIS ___ DAY OF ___ 198