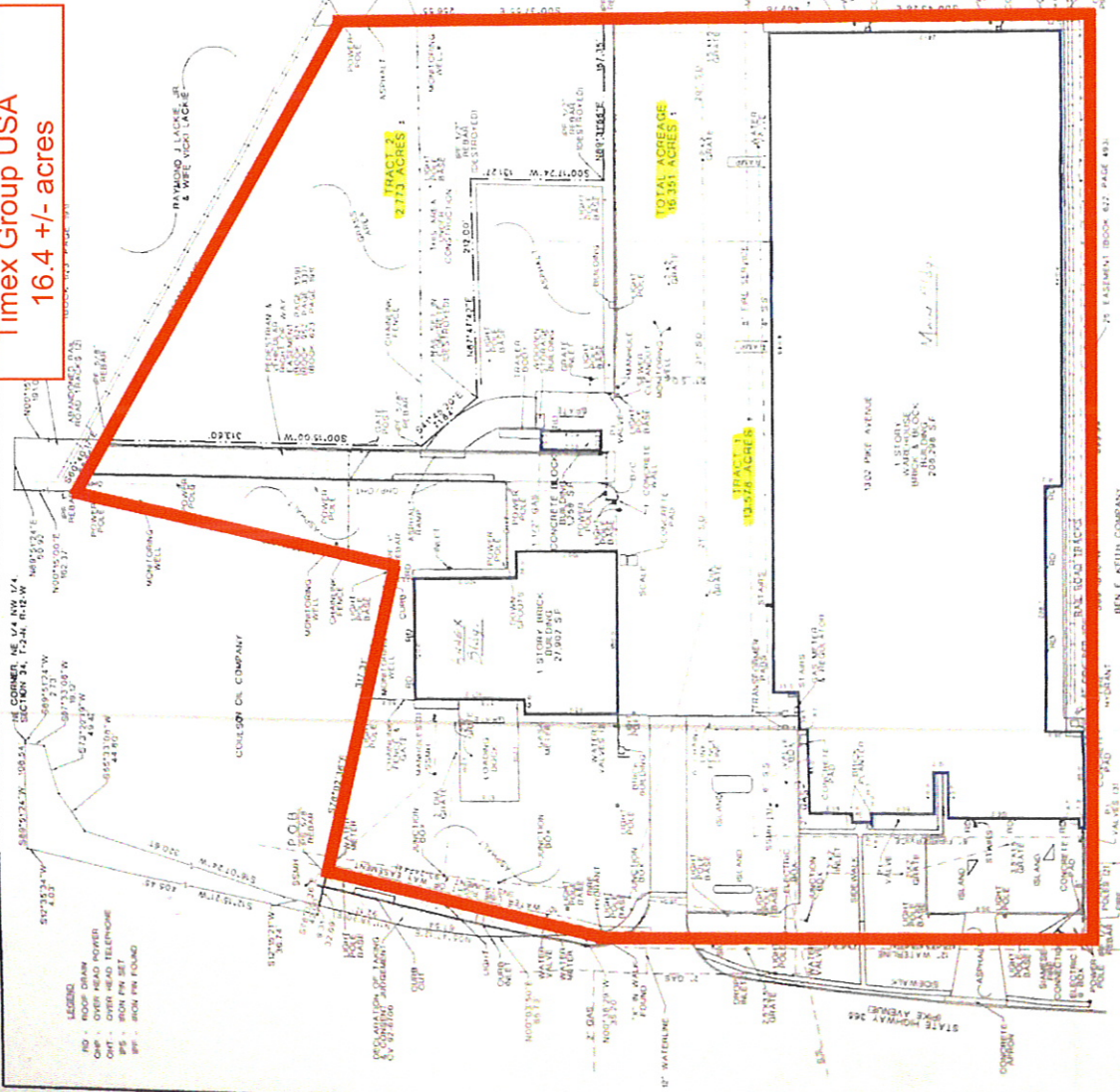


**Timex Group USA**  
16.4 +/- acres

**GENERAL NOTES:**  
 1. ALL DIMENSIONS ARE TO FACE UNLESS OTHERWISE NOTED.  
 2. THE SURVEY IS BASED ON THE NE CORNER OF SECTION 34, T24N, R14W, 34E. THE LOCATION OF THIS CORNER IS SHOWN BY THE DOTTED LINE AND DIMENSIONS TO THE NE CORNER OF SECTION 34, T24N, R14W, 34E.  
 3. ALL DIMENSIONS ARE TO FACE UNLESS OTHERWISE NOTED.  
 4. THE SURVEY IS BASED ON THE NE CORNER OF SECTION 34, T24N, R14W, 34E. THE LOCATION OF THIS CORNER IS SHOWN BY THE DOTTED LINE AND DIMENSIONS TO THE NE CORNER OF SECTION 34, T24N, R14W, 34E.  
 5. ALL DIMENSIONS ARE TO FACE UNLESS OTHERWISE NOTED.  
 6. THE SURVEY IS BASED ON THE NE CORNER OF SECTION 34, T24N, R14W, 34E. THE LOCATION OF THIS CORNER IS SHOWN BY THE DOTTED LINE AND DIMENSIONS TO THE NE CORNER OF SECTION 34, T24N, R14W, 34E.  
 7. ALL DIMENSIONS ARE TO FACE UNLESS OTHERWISE NOTED.  
 8. THE SURVEY IS BASED ON THE NE CORNER OF SECTION 34, T24N, R14W, 34E. THE LOCATION OF THIS CORNER IS SHOWN BY THE DOTTED LINE AND DIMENSIONS TO THE NE CORNER OF SECTION 34, T24N, R14W, 34E.  
 9. ALL DIMENSIONS ARE TO FACE UNLESS OTHERWISE NOTED.  
 10. THE SURVEY IS BASED ON THE NE CORNER OF SECTION 34, T24N, R14W, 34E. THE LOCATION OF THIS CORNER IS SHOWN BY THE DOTTED LINE AND DIMENSIONS TO THE NE CORNER OF SECTION 34, T24N, R14W, 34E.  
 11. ALL DIMENSIONS ARE TO FACE UNLESS OTHERWISE NOTED.  
 12. THE SURVEY IS BASED ON THE NE CORNER OF SECTION 34, T24N, R14W, 34E. THE LOCATION OF THIS CORNER IS SHOWN BY THE DOTTED LINE AND DIMENSIONS TO THE NE CORNER OF SECTION 34, T24N, R14W, 34E.



**PROPERTY DESCRIPTION:**  
 Tract 3, located in the NE 1/4 of the NE 1/4 of Section 34, T24N, R14W, 34E, contains approximately 2773 acres. The tract is bounded to the north by the NE 1/4 of Section 34, T24N, R14W, 34E, to the east by the NE 1/4 of Section 34, T24N, R14W, 34E, to the south by the NE 1/4 of Section 34, T24N, R14W, 34E, and to the west by the NE 1/4 of Section 34, T24N, R14W, 34E.

**PROPERTY DESCRIPTION:**  
 Tract 1, located in the NE 1/4 of the NE 1/4 of Section 34, T24N, R14W, 34E, contains approximately 16351 acres. The tract is bounded to the north by the NE 1/4 of Section 34, T24N, R14W, 34E, to the east by the NE 1/4 of Section 34, T24N, R14W, 34E, to the south by the NE 1/4 of Section 34, T24N, R14W, 34E, and to the west by the NE 1/4 of Section 34, T24N, R14W, 34E.



**SURVEY UPDATED MAY 20TH, 2009**  
 UNDER CONSTRUCTION  
 TOTAL SQUARE FEET AVAILABLE

**SITE PLAN**

SHEET 1 OF 1  
 DATE: 11/20/09  
 SCALE: AS SHOWN

**SURVEY FOR:**  
 HEARTLAND VENTURES  
 NORTH LITTLE ROCK, ARKANSAS

ALTA FACSIM (LAND TITLE SURVEY OF PART OF THE NE 1/4 OF THE NW 1/4 AND PART OF THE NW 1/4 OF THE NE 1/4, SECTION 34, T24N, R14W, PULASKI CO., ARKANSAS

**REVISIONS TO DRAWINGS**  
 THE PLANS AND SPECIFICATIONS ACCOMPANIED BY THIS DRAWING ARE THE PROPERTY OF THE SURVEYOR. NO PART OF THIS DRAWING IS TO BE REPRODUCED OR TRANSMITTED IN ANY FORM OR BY ANY MEANS, WITHOUT EXPRESS WRITTEN PERMISSION OF THE SURVEYOR.

NO.	DATE	BY	DESCRIPTION
1	11/20/09	Ben E. Keith	Initial Survey
2	11/20/09	Ben E. Keith	Final Survey

**BEN E. KEITH COMPANY**

1000 W. MARKET ST. SUITE 100  
 PULASKI COUNTY, ARKANSAS 72114  
 (501) 835-4444  
 WWW.BENKEITH.COM