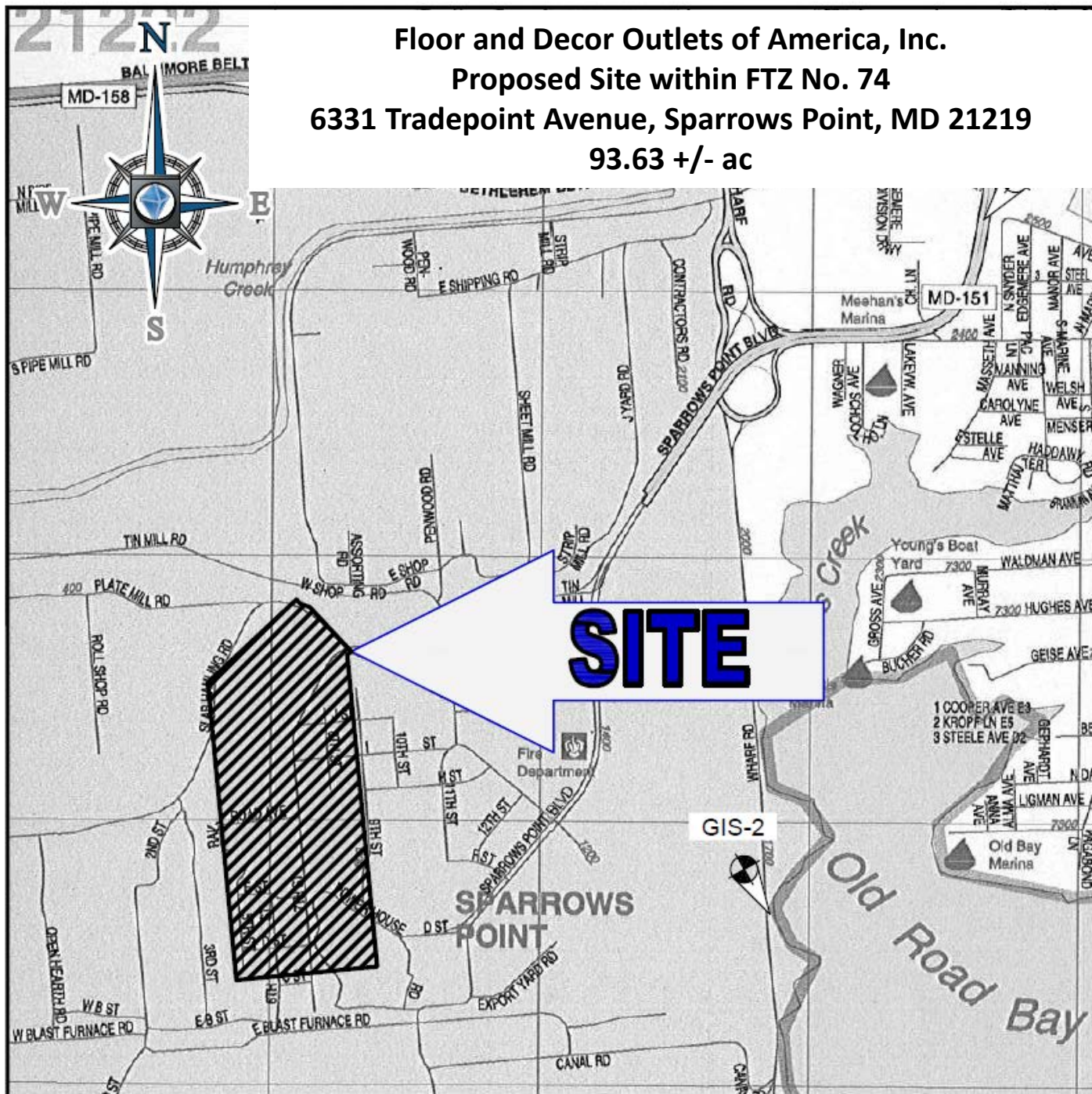


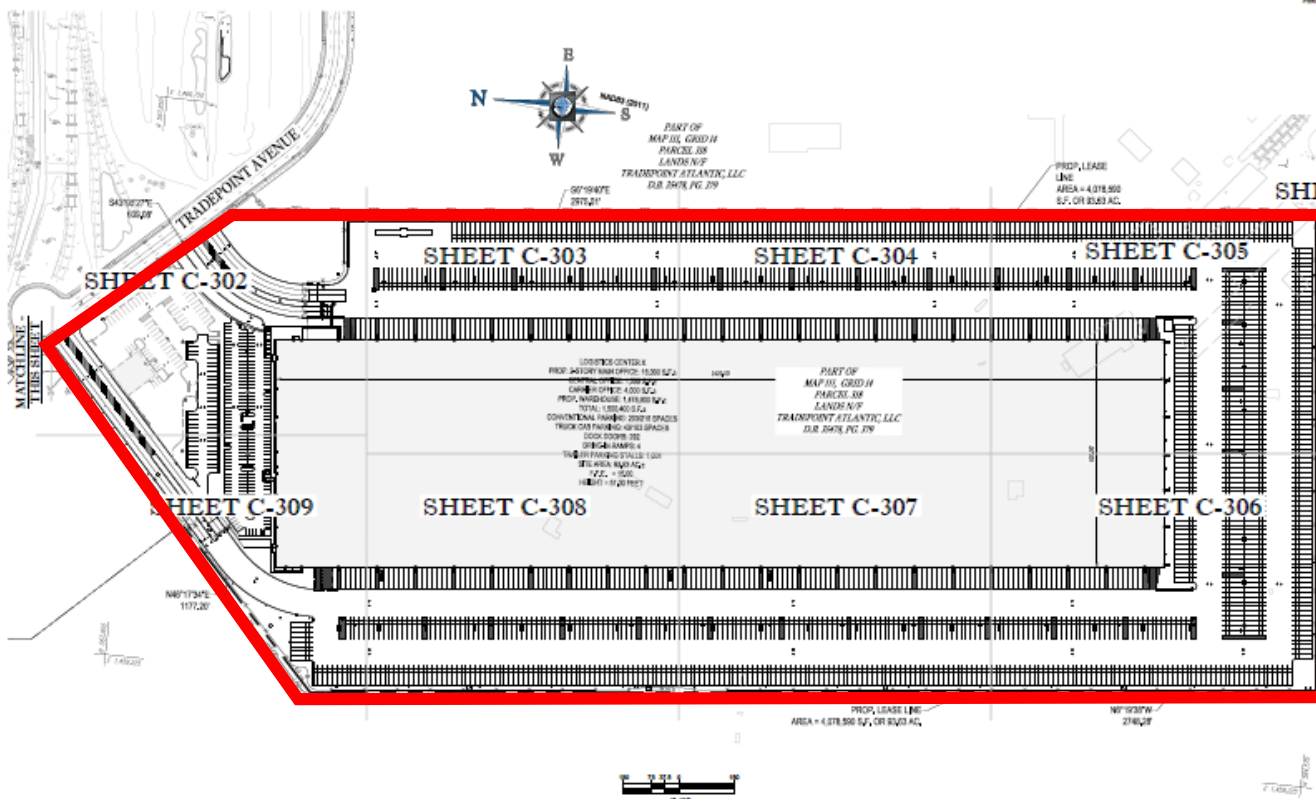
Floor and Decor Outlets of America, Inc.
Proposed Site within FTZ No. 74
6331 Tradepoint Avenue, Sparrows Point, MD 21219
93.63 +/- ac



**Floor and Decor Outlets of America, Inc.
Proposed Site within FTZ No. 74
6331 Tradepoint Avenue, Sparrows Point, MD 21219
93.63 +/- ac**



LOCATION MAP
CONTRIBUTOR: BOHLER ENGINEERING
PROJECT: MAP NO. 28021618
SCALE: 1"=500'



BOHLER ENGINEERING
REGISTERED PROFESSIONAL ENGINEERS
LAPLANTHA DRIVE
BALTIMORE, MD 21219
PHONE: 410.421.7887
FAX: 410.421.7887
WWW.BOHLENERG.COM

REVISIONS

NO.	DATE	COMMENTS	BY
1	02/08/18	REV. COUNTY	DMB
2	03/08/18	REV. COUNTY	DMB
3	03/08/18	REV. THE STATE	DMB
4	03/08/18	REV. ALIGNMENT	DMB
5	03/08/18	REV. PROPERTY LINE	DMB
6	03/08/18	REV. PROPERTY LINE	DMB
7	03/08/18	REV. PROPERTY LINE	DMB
8	03/08/18	REV. PROPERTY LINE	DMB
9	03/08/18	REV. PROPERTY LINE	DMB
10	03/08/18	REV. PROPERTY LINE	DMB
11	03/08/18	REV. PROPERTY LINE	DMB
12	03/08/18	REV. PROPERTY LINE	DMB
13	03/08/18	REV. PROPERTY LINE	DMB
14	03/08/18	REV. PROPERTY LINE	DMB
15	03/08/18	REV. PROPERTY LINE	DMB
16	03/08/18	REV. PROPERTY LINE	DMB
17	03/08/18	REV. PROPERTY LINE	DMB
18	03/08/18	REV. PROPERTY LINE	DMB
19	03/08/18	REV. PROPERTY LINE	DMB
20	03/08/18	REV. PROPERTY LINE	DMB

811
KNOW WHAT'S BELOW
ALWAYS CALL 811
BEFORE YOU DIG
Public Works Division

APPROVED FOR CONSTRUCTION
DATE: 03/08/18
SCALE: AS SHOWN

PROJECT: **PROJECT SLATE (F.K.A. LOGISTICS CENTER X)**
JOB:
TRADEPOINT ATLANTIC
PHASE: **2 PLANS**
LOCATION OF SITE:
TRADEPOINT AVENUE
TAX MAP 111, PARCEL 38
BALTIMORE, MD 21219
BALTIMORE COUNTY

BOHLER ENGINEERING
301 COLONY VALLEY ROAD, SUITE 200
TOWSON, MARYLAND 21286
Phone: 410.421.7887
Fax: 410.421.7887
www.bohlereng.com

ANDREW G. STINE
PROFESSIONAL ENGINEER

OVERALL SITE PLAN
SHEET NUMBER:
C-301

ARCHITECTURAL REFERENCE
THIS PLAN IS BASED ON ARCHITECTURAL PLANS PREPARED BY DANA ARCHITECTURAL, INC. FOR THE FACILITY FOR FLOOR & DECOR 6331 TRADEPOINT AVENUE, BALTIMORE, MARYLAND 21219. ANY AND ALL CHANGES TO THIS DRAWING SHALL BE MADE BY THE ARCHITECT.

REVISIONS BASED ON NAVD 83
COORDINATES AND METRICS ARE BASED ON
THE NAD 83 AND COORDINATE SYSTEMS AND
PER REGULATIONS NAD 83 AND USGS 2'

MD REG. NO. 19-00-0021