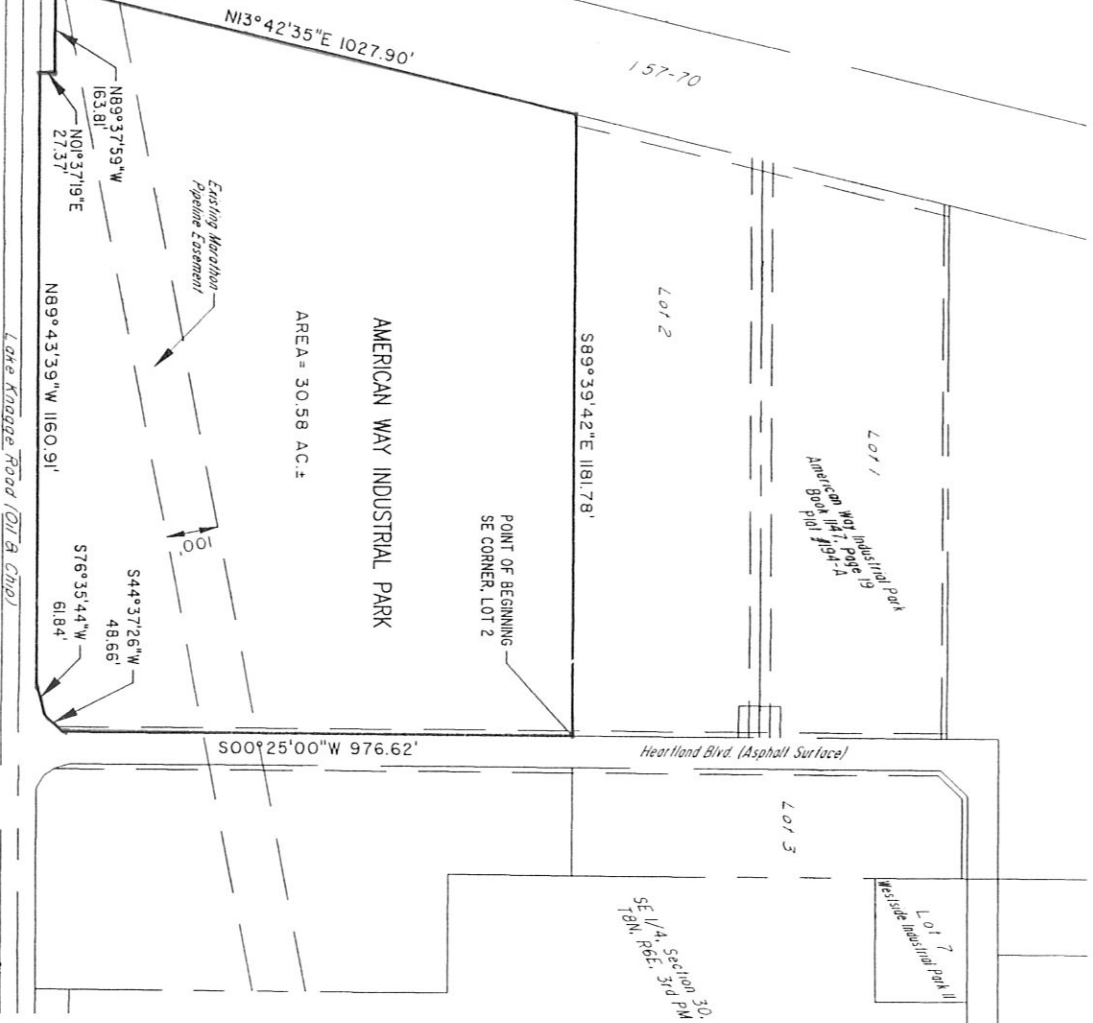


# UNDEVELOPED TRACT

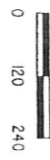
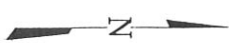


## LEGAL DESCRIPTION

A part of Southeast Quarter, and a part of the Southwest Quarter of Section 30, Township 8 North, Range 6 East of the Third Principal Meridian, Effingham County, Illinois, more particularly described as follows:

Beginning at the Southeast Corner of Lot 2 of American Way Industrial Park, reference made to the plat recorded in Book 1147, Page 19, Plat #194-A, at the Recorder's office of Effingham County:

- Thence, S 00° 25' 00" W, assumed being, along the West Right-of-Way line of Heartland Boulevard, a distance of 976.62 feet;
- Thence, S 44° 37' 26" W, a distance of 48.66 feet;
- Thence, S 76° 35' 44" W, a distance of 61.84 feet;
- Thence, N 89° 43' 39" W, a distance of 1160.91 feet;
- Thence, N 01° 37' 19" E, a distance of 27.37 feet;
- Thence, N 89° 37' 59" W, a distance of 163.81 feet;
- Thence, N 139° 42' 35" E, along the East Right-of-Way line of Interstate 57/70, a distance of 1027.90 feet;
- Thence, S 89° 39' 42" E, along the South line of said Lot 2, a distance of 1181.78 feet to the POINT OF BEGINNING and containing 30.58 acres more or less.



	<b>MILANO &amp; GRUNDLOH ENGINEERS, INC.</b> 211 NORTH THIRD STREET P.O. BOX 937 EFFINGHAM, ILLINOIS 62401 PHONE: (217) 547-1282 (800) 677-2714 FAX #: (217) 542-3433
	BOUNDARY PLAT A PART OF THE AMERICAN WAY INDUSTRIAL PARK, A PART OF SECTION 30, T8N, R6E, 3rd P.M., EFFINGHAM COUNTY, ILLINOIS

File name: H:\95\35250A\WLDW9  
 Plot date: 01/18/99 at 08:50  
 FB 450