



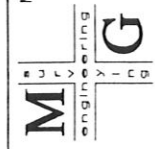
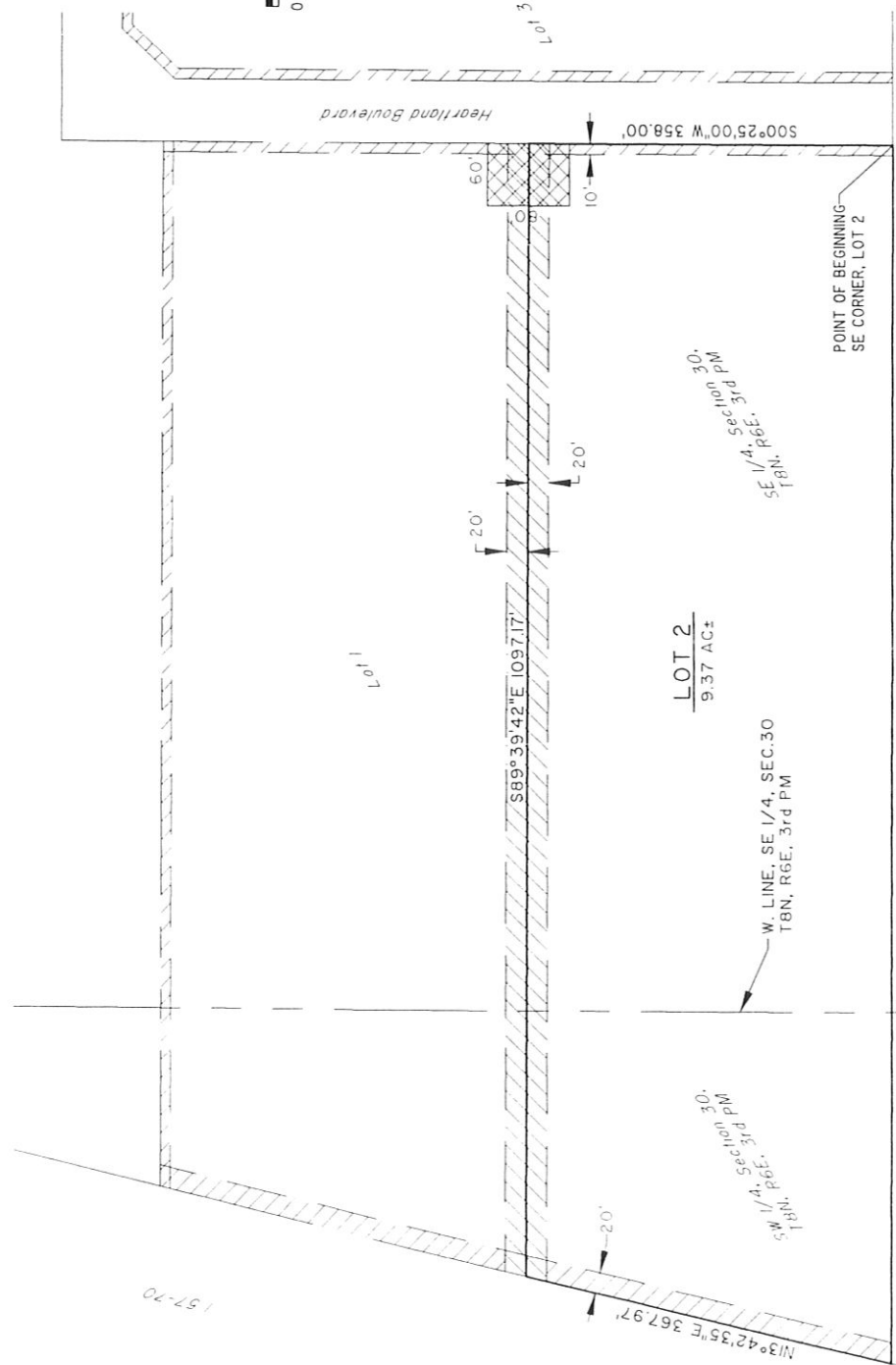
LEGEND

- CROSS USE EASEMENT
- TEMPORARY PUBLIC EASEMENT FOR TURNAROUND
- PERMANENT EASEMENT

LEGAL DESCRIPTION

Lot 2 of American Way Industrial Park, reference made to the Plat recorded in Book 1147, Page 19, Plat #194A at the Recorder's office of Effingham County, Effingham Illinois more particularly described as follows:

- Beginning at the Southeast Corner of said Lot 2
- Thence, N 89° 39' 42" W, assumed bearing, along the South line of said Lot 2, a distance of 1181.78 feet;
- Thence, N 13° 42' 35" E, along the West line of said Lot 2, a distance of 367.97 feet;
- Thence, S 89° 39' 42" E, along the North line of said Lot 2, a distance of 1097.17 feet;
- Thence, S 00° 25' 00" W, along the East line of said Lot 2, a distance of 358.00 feet to the POINT OF BEGINNING and containing 9.37 acres more or less.



MILANO & GRUNLOH ENGINEERS, INC.
 211 NORTH THIRD STREET
 P.O. BOX 897
 EFFINGHAM, ILLINOIS 62401
 PHONE: (217) 347-7262
 (800) 677-2714
 FAX #: (217) 342-3433

File name: H:\95\95203BP.dwg
 Plot date: 01/18/99 at 08:45
 FB. 450

BOUNDARY PLAT
 LOT 2, A PART OF THE AMERICAN WAY INDUSTRIAL PARK, A PART OF THE S 1/2, SECTION 30, T8N, R6E, 3rd P.M., EFFINGHAM COUNTY, ILLINOIS

TQW WAREHOUSE