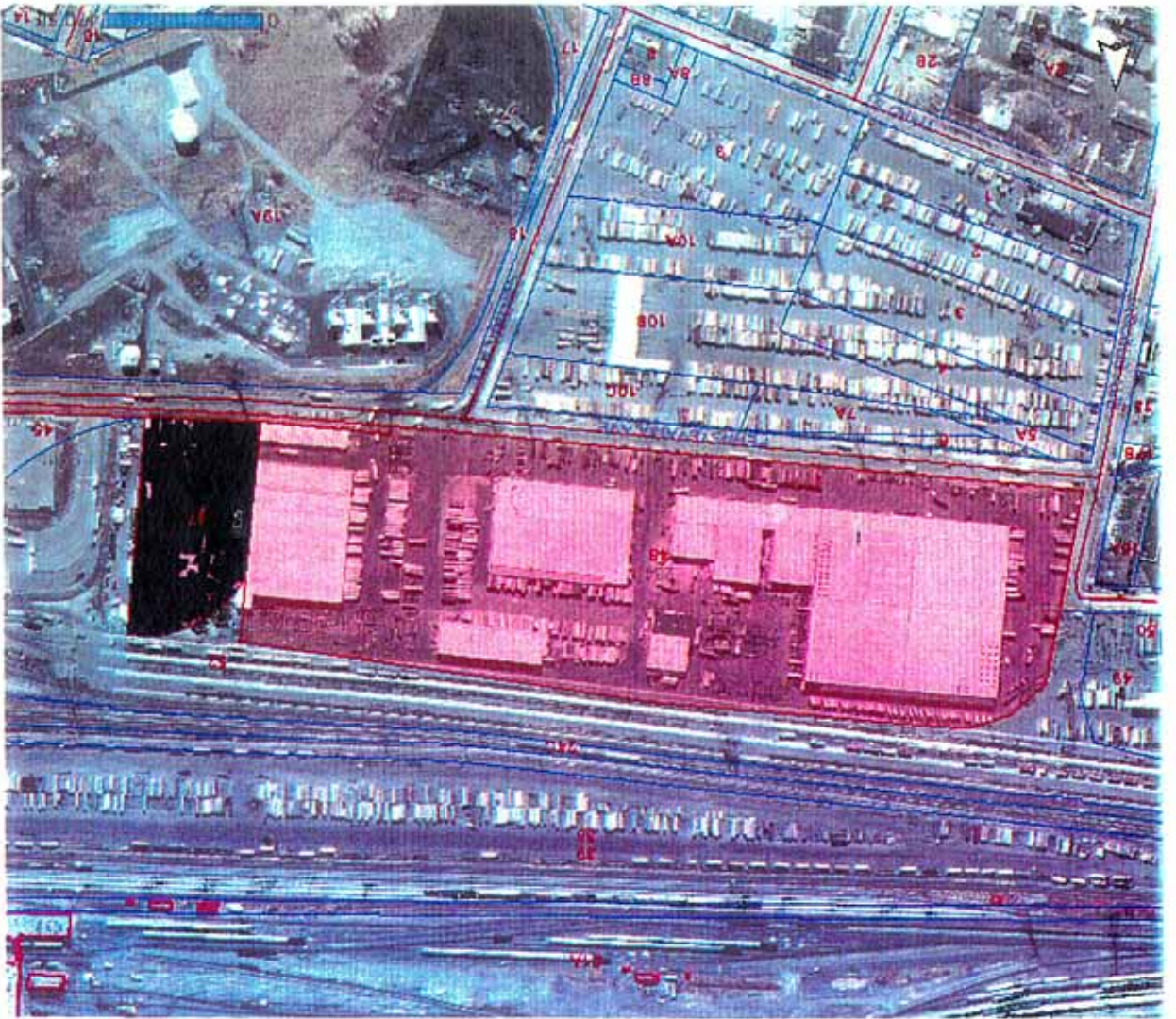


284/48



Legend

- .BlockLabel
- .LotLabel
- .RoadLabel
- CENTERLINES
- Parcels
- Buildings (NJMC)
- *ImageDirectory



Notes:

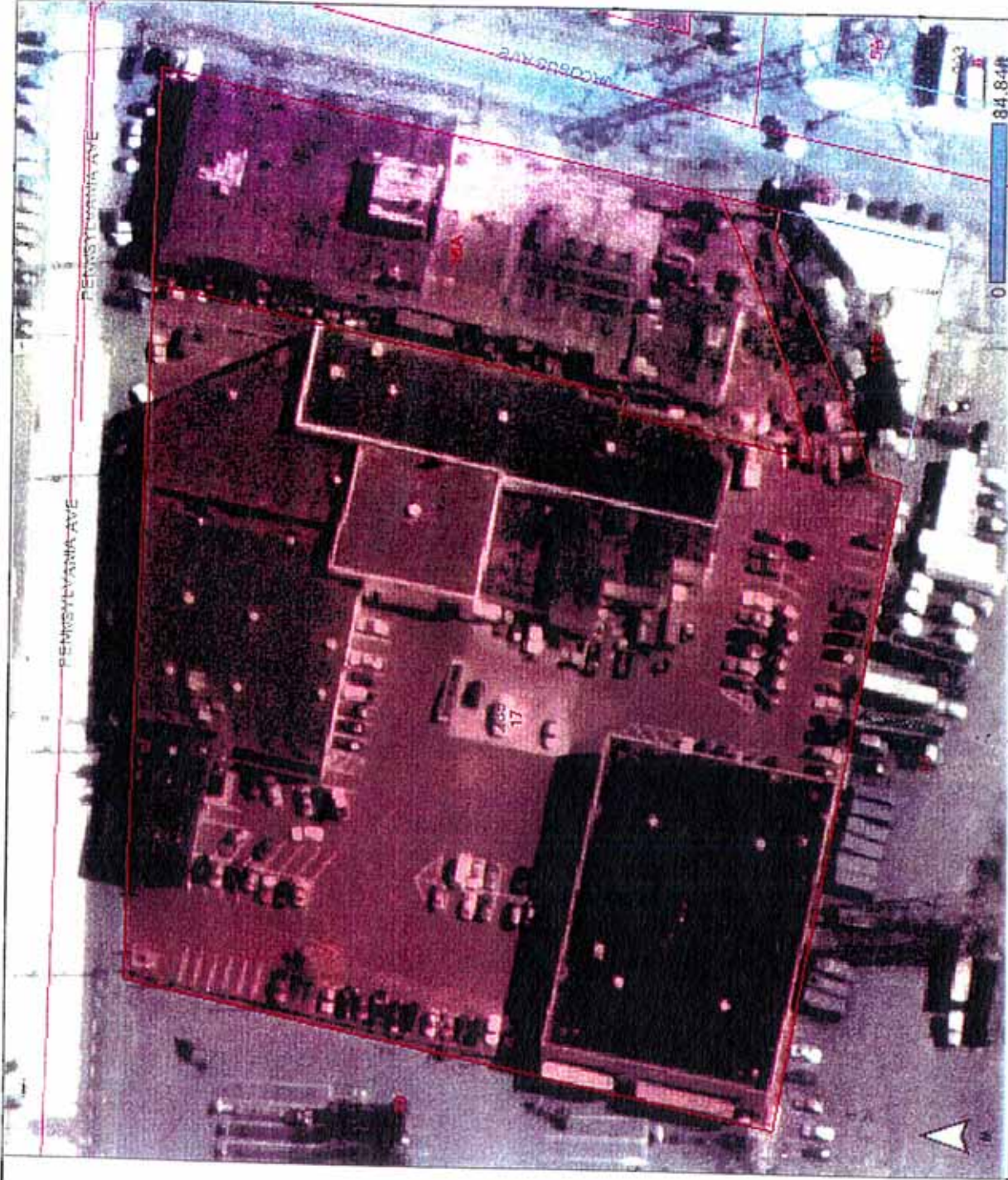
This map was developed using New Jersey Department of Environmental Protection Geographic Information System digital data, but this secondary product has not been verified by NJDEP and is not state-authorized.

288/1, 2, 3, 3R, 4

March 4, 2005

Legend

- .BlockLabel
- .LotLabel
- .RoadLabel
- CENTERLINES
- Parcels
- Buildings (NJMC)
- *ImageDirectory



Notes:

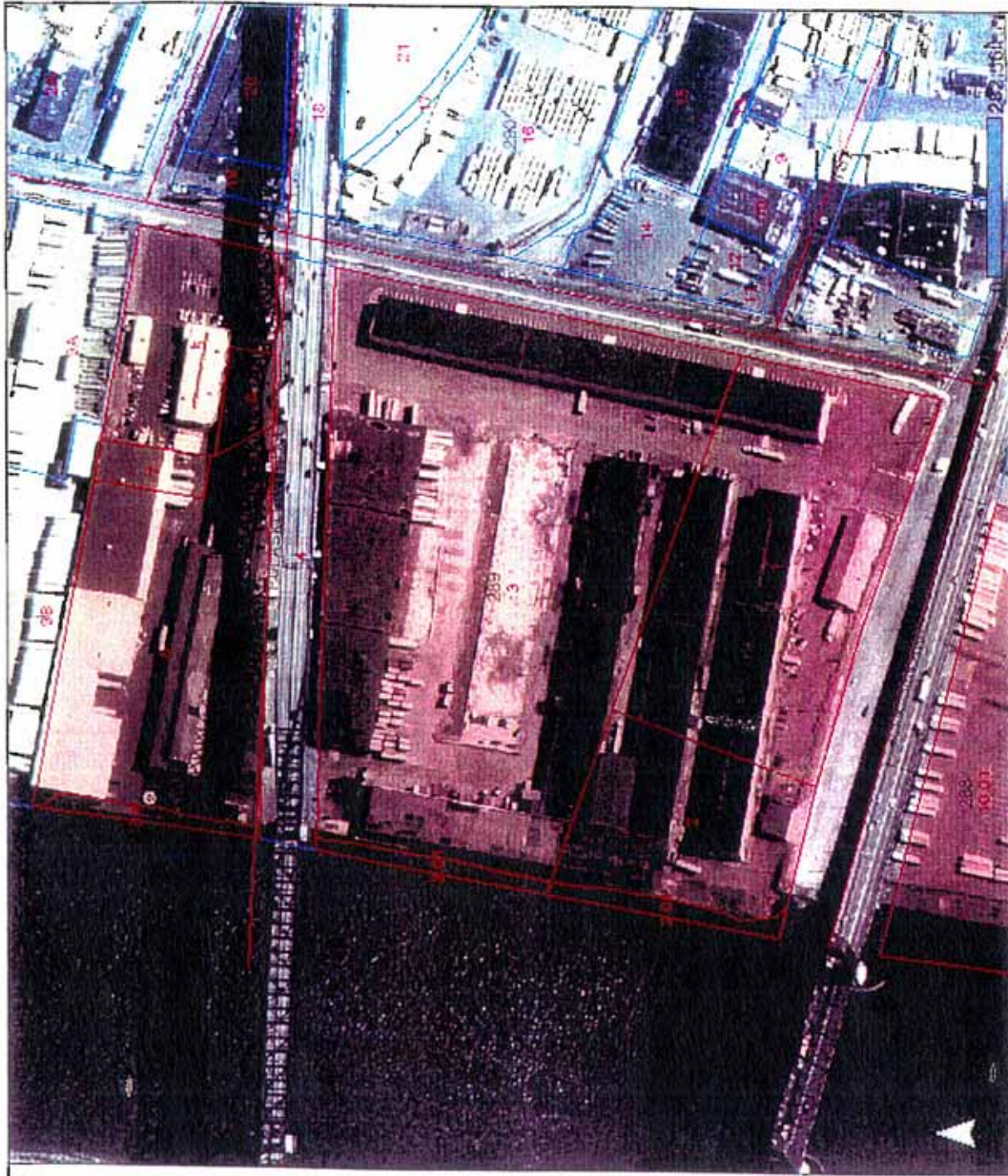
This map was developed using New Jersey Department of Environmental Protection Geographic Information System digital data, but this secondary product has not been verified by NJDEP and is not state-authorized.

289/16A, 17 includes 16

March 4, 2005

Legend

- .BlockLabel
- .LotLabel
- .RoadLabel
- CENTERLINES
- Parcels
- Buildings (NJMC)
- *ImageDirectory



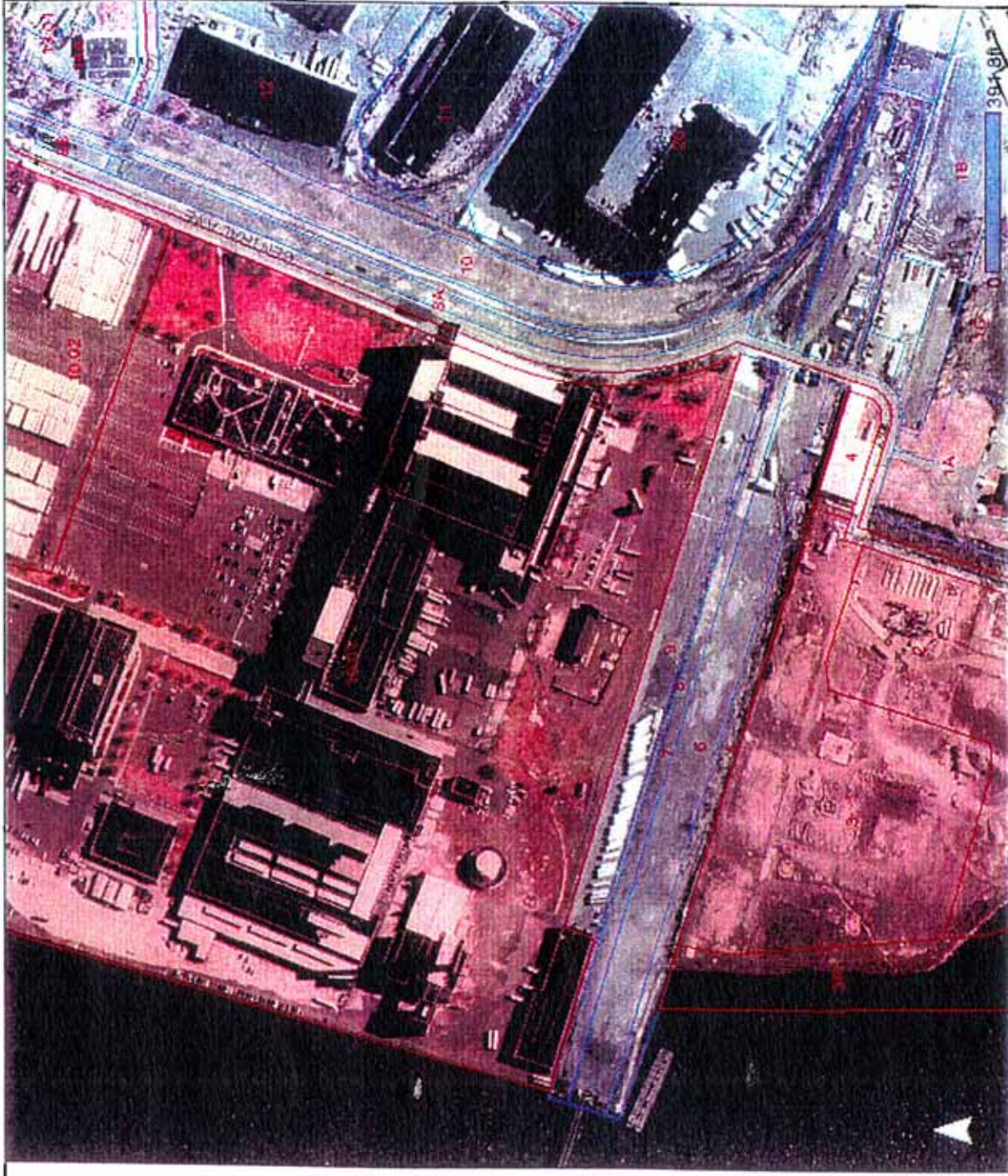
March 4, 2005

289/1, 2, 2R(2.01), 3, 3R(3.01), 5, 6, 7, 8, 8R(8.01)

Notes:
This map was developed using New Jersey Department of Environmental Protection Geographic Information System digital data, but this secondary product has not been verified by NJDEP and is not state authorized.

Legend

- .BlockLabel
- .LotLabel
- .RoadLabel
- CENTERLINES
- Parcels
- Buildings (NJMC)
- *ImageDirectory



March 4, 2005

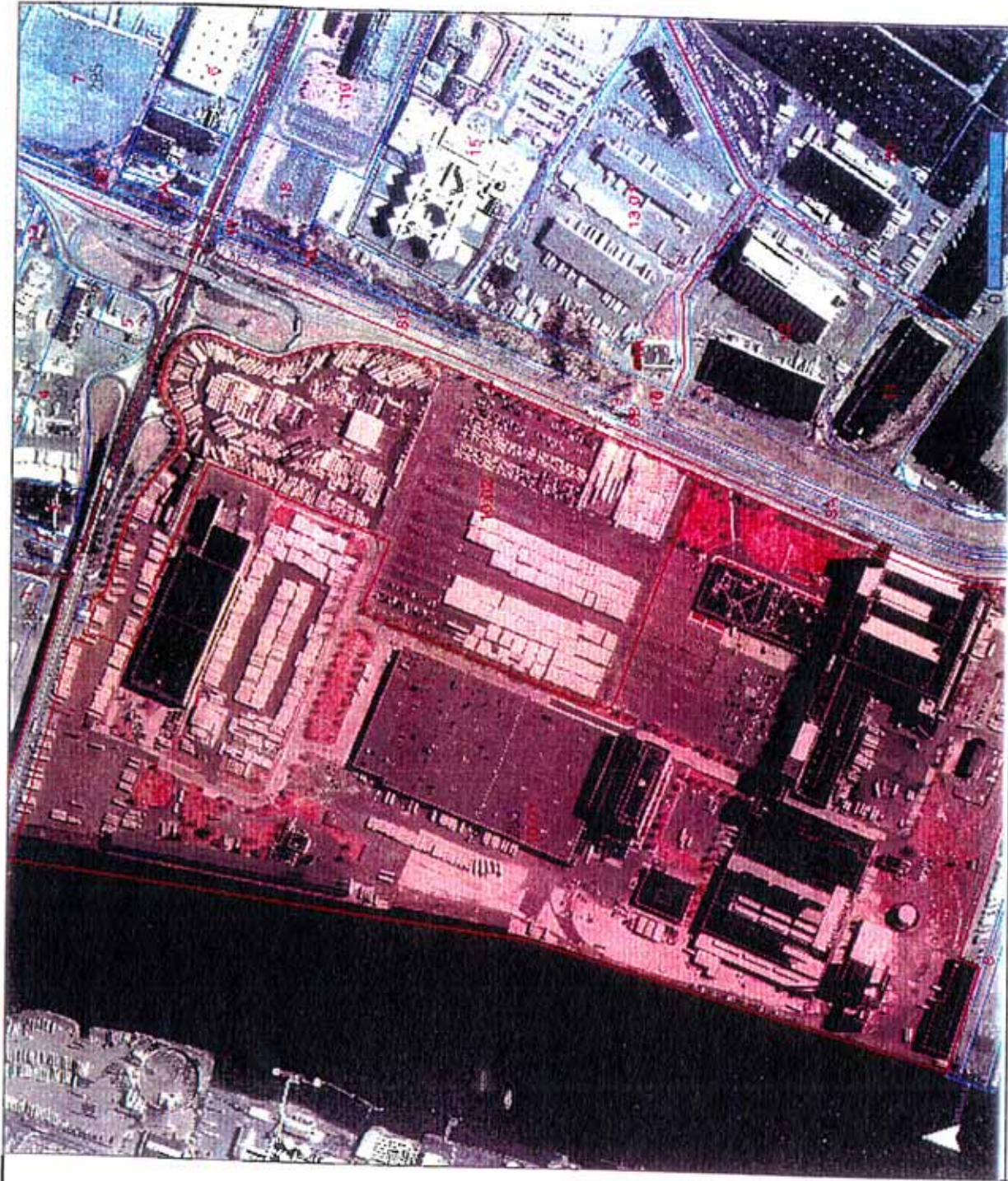
288/10.01, 10.02 includes 10.03, 10.04 (b)

Notes:

This map was developed using New Jersey Department of Environmental Protection Geographic Information System digital data, but this secondary product has not been verified by NJDEP and is not state-authorized.

Legend

- .BlockLabel
- .LotLabel
- .RoadLabel
- CENTERLINES
- Parcels
- Buildings (NJMC)
- *ImageDirectory



Notes:

This map was developed using New Jersey Department of Environmental Protection Geographic Information System digital data, but this secondary product has not been verified by NJDEP and is not state-authorized.

288/10.01, 10.02 includes 10.03, 10.04

March 4, 2005

Legend

- .BlockLabel
- .LotLabel
- .RoadLabel
- CENTERLINES
- Parcels
- Buildings (NJMC)
- *ImageDirectory



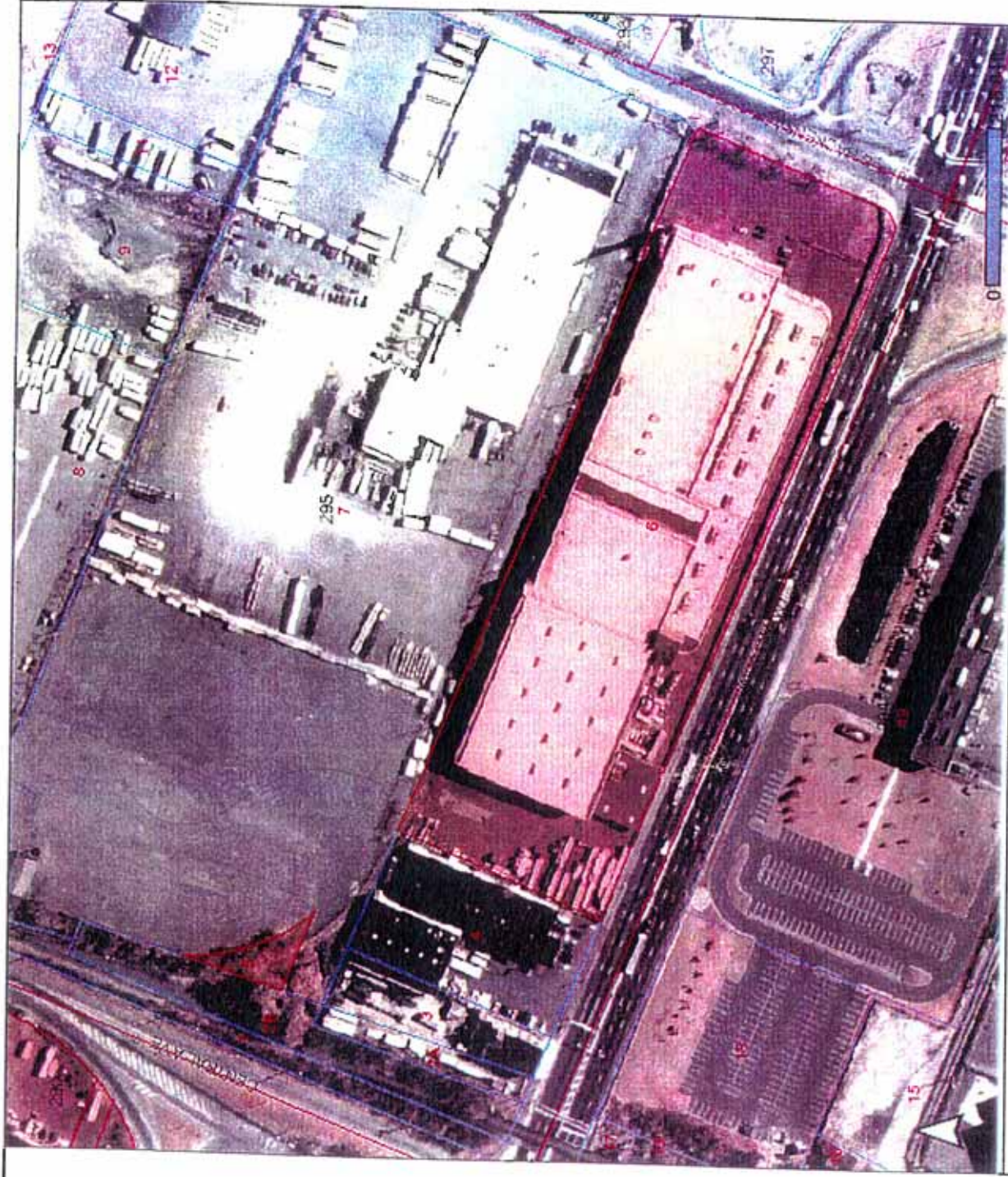
March 4, 2005

294/8A, 8B, 8C, 12, 13.01, 20

Notes:
This map was developed using New Jersey Department of Environmental Protection Geographic Information System digital data, but this secondary product has not been verified by NJDEP and is not state-authorized.

Legend

- .BlockLabel
- .LotLabel
- .RoadLabel
- CENTERLINES
- Parcels
- Buildings (NJMC)
- *ImageDirectory



295/5, 6

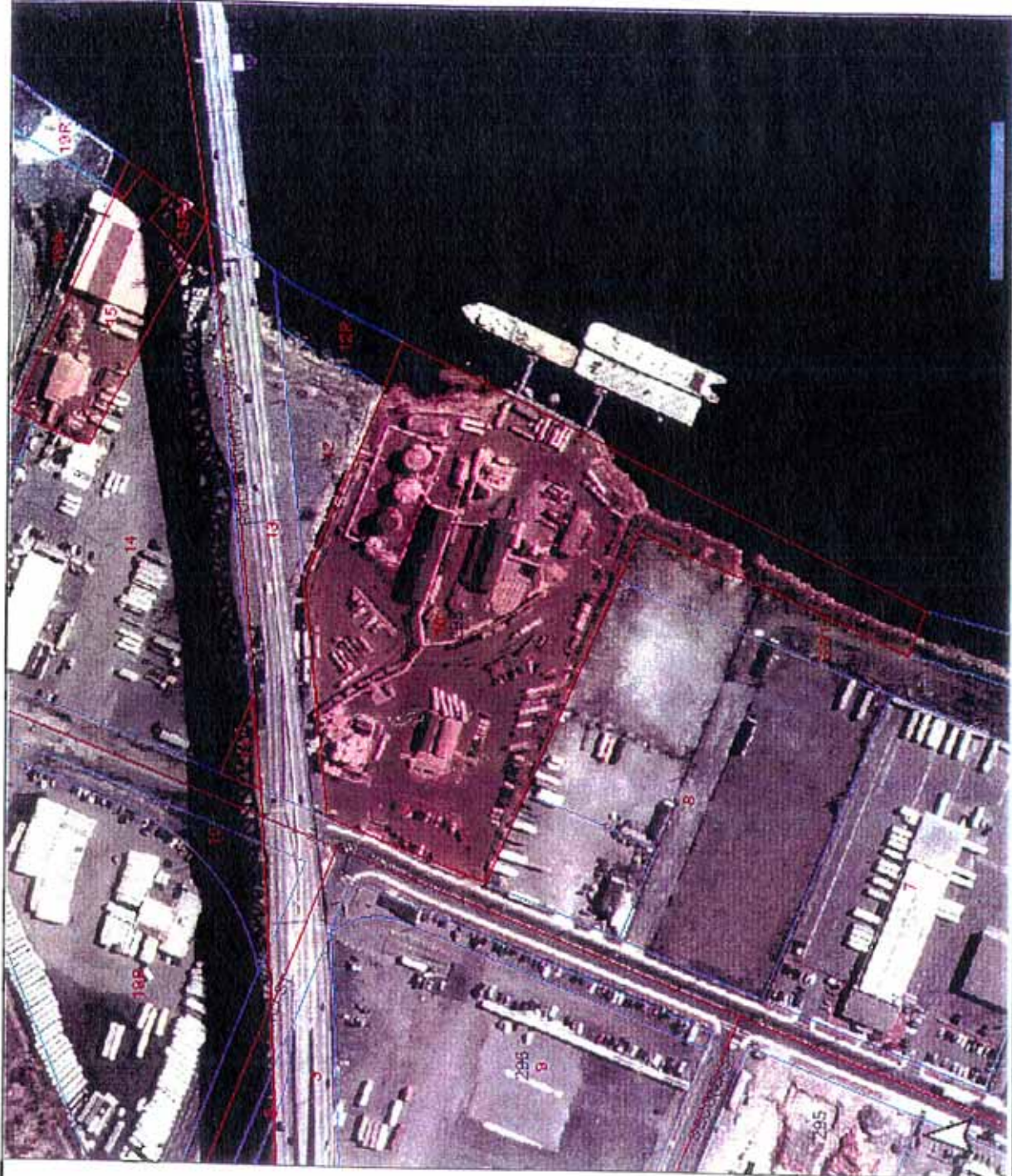
Notes:

This map was developed using New Jersey Department of Environmental Protection Geographic Information System digital data, but this secondary product has not been verified by NJDEP and is not state-authorized.

March 4, 2005

Legend

- .BlockLabel
- .LotLabel
- .RoadLabel
- CENTERLINES
- Parcels
- Buildings (NJMC)
- *ImageDirectory



Notes:

This map was developed using New Jersey Department of Environmental Protection Geographic Information System digital data, but this secondary product has not been verified by NJDEP and is not state-authorized.

298/10, 11, 15, 15R

March 4, 2005