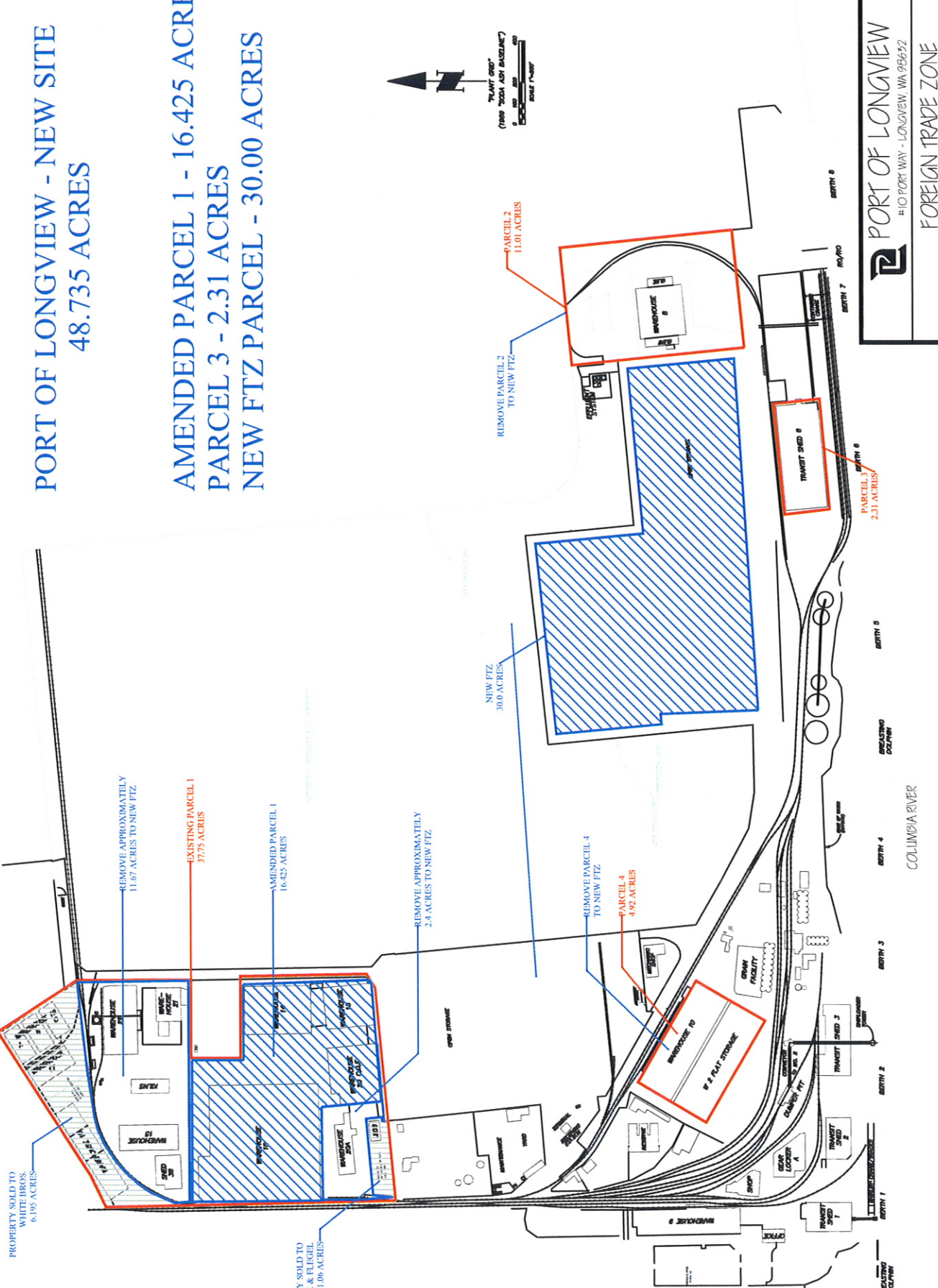


PORT OF LONGVIEW - NEW SITE 48.735 ACRES

AMENDED PARCEL 1 - 16.425 ACRES PARCEL 3 - 2.31 ACRES NEW FTZ PARCEL - 30.00 ACRES

EXISTING FTZ
NEW FTZ



PORT OF LONGVIEW #10 PORT WAY - LONGVIEW, WA 98652 FOREIGN TRADE ZONE					
DESIGN	S. CLARK	DATE	4-15-08	SCALE	NONE
DRAWN	B. STAGGS	PLOT	1-1	DWG. NO.	FTZ.2008
CHK'D	S. CLARK	REV.	0	SHEET	1 OF 1