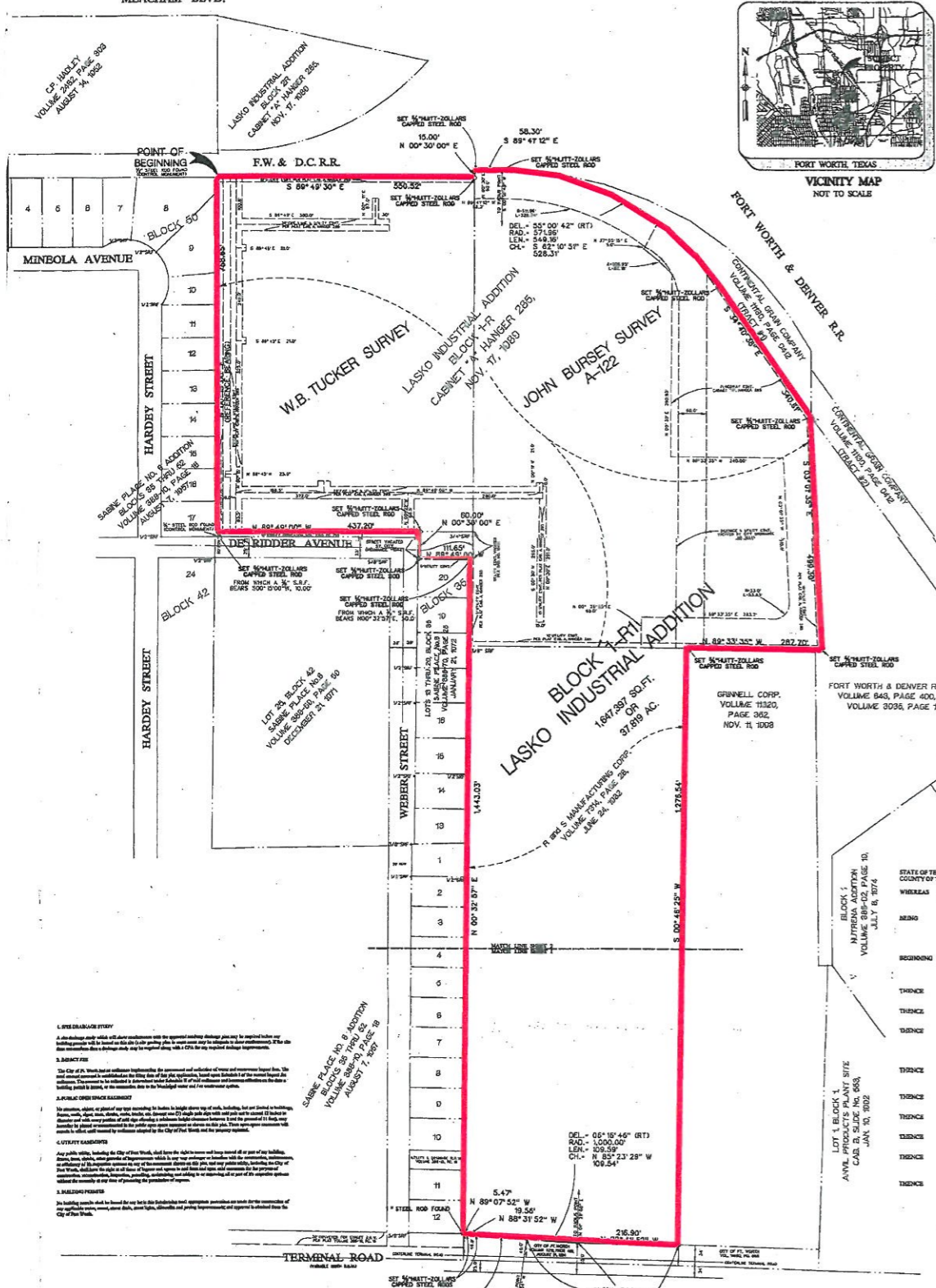


MEACHAM BLVD.



1. LEGAL DESCRIPTION
 This plat is a replat of Block 1-R, Lasko Industrial Addition, as shown on the plat recorded in Volume 734, Page 28, Deed Records, Tarrant County, Texas, and all of a tract of land situated in the John Bursey Survey, Abstract No. 122 described in the deed to R and S Manufacturing Corp., recorded in Volume 734, Page 28, Deed Records, Tarrant County, Texas.

2. ADJACENT PROPERTIES
 To the north, the property of Lasko Industrial Addition, as shown on the plat recorded in Volume 734, Page 28, Deed Records, Tarrant County, Texas.

3. SURVEY DATA
 DEL. = 86° 16' 46" (RT)
 RAD. = 1,000.00'
 L1 = 328.59'
 CH. = N 85° 23' 29" W
 108.54'

OWNER'S DECLARATION
 STATE OF TEXAS
 COUNTY OF TARRANT
 I, **DAVID L. HUNTT-ZOLLARS**, Surveyor, do hereby certify that the above described plat is a true and correct copy of the original plat on file in my office, and that the same has been duly recorded in the public records of the County of Tarrant, Texas, and that the same is a true and correct copy of the original plat on file in my office, and that the same has been duly recorded in the public records of the County of Tarrant, Texas.

NOTICE
 This plat is a replat of Block 1-R, Lasko Industrial Addition, as shown on the plat recorded in Volume 734, Page 28, Deed Records, Tarrant County, Texas, and all of a tract of land situated in the John Bursey Survey, Abstract No. 122 described in the deed to R and S Manufacturing Corp., recorded in Volume 734, Page 28, Deed Records, Tarrant County, Texas.

NOTICE
 This plat is a replat of Block 1-R, Lasko Industrial Addition, as shown on the plat recorded in Volume 734, Page 28, Deed Records, Tarrant County, Texas, and all of a tract of land situated in the John Bursey Survey, Abstract No. 122 described in the deed to R and S Manufacturing Corp., recorded in Volume 734, Page 28, Deed Records, Tarrant County, Texas.

CITY OF FORT WORTH, TEXAS
 CITY PLAN COMMISSION
 THIS PLAT IS VALID ONLY IF RECORDED WITHIN SIX (6) MONTHS AFTER DATE OF APPROVAL.
 PLAT APPROVAL DATE: _____
 BY: _____ CHAIRMAN
 BY: _____ SECRETARY

OWNER:
Lasko Metal Products, Inc.
 of Fort Worth, Texas
 1700 Meacham Blvd.
 FORT WORTH, TEXAS, 76106

SURVEYOR:
HUNTT-ZOLLARS
 Hunt-Zollars, Inc.
 620 W. 10th St., Suite 2000
 Fort Worth, Texas 76102
 Phone (817) 331-3300 Fax (817) 331-3305

Replat Showing Block 1-R, Lasko Industrial Addition
 Being a replat of Block 1-R, Lasko Industrial Addition to the City of Fort Worth per plat recorded in Cabinet A, Hanger 285, Deed Records, Tarrant County, Texas, and all of a tract of land situated in the John Bursey Survey, Abstract No. 122 described in the deed to R and S Manufacturing Corp., recorded in Volume 734, Page 28, Deed Records, Tarrant County, Texas.

PRELIMINARY

PRELIMINARY - THIS DOCUMENT SHALL NOT BE RECORDED FOR ANY PURPOSE.

SURVEYOR'S CERTIFICATE
 I hereby certify that the plat herein is a true and correct copy of the original plat on file in my office, and that the same has been duly recorded in the public records of the County of Tarrant, Texas, and that the same is a true and correct copy of the original plat on file in my office, and that the same has been duly recorded in the public records of the County of Tarrant, Texas.

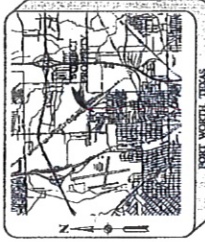
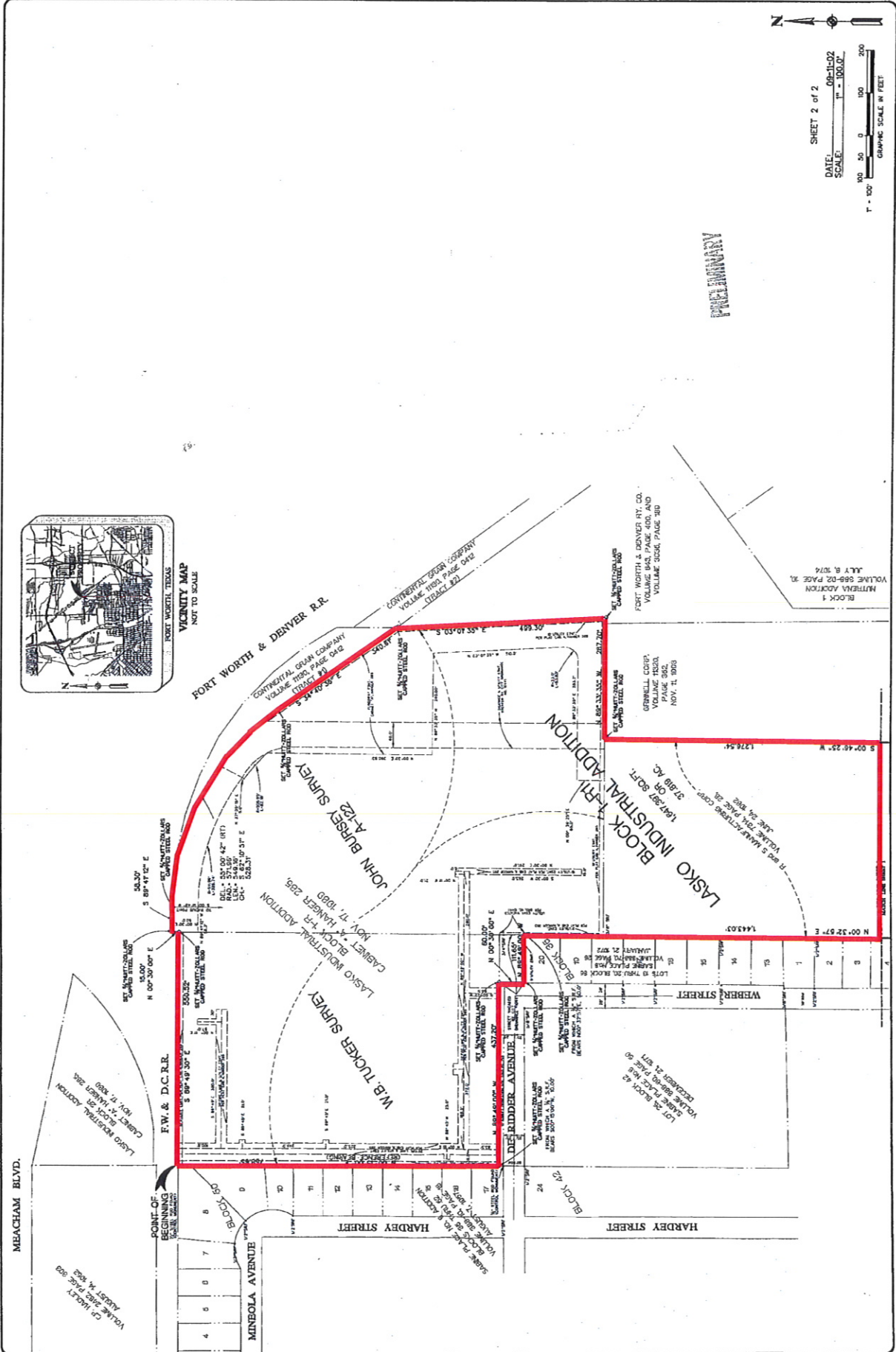
By: **Mike D. Howell**
 Registered Professional Land Surveyor
 No. 4517
 Docket

SHEET 1 of 2
 DATE: 09-11-02
 SCALE: 1" = 100.0'
 GRAPHIC SCALE IN FEET

PLATED SCALE: 1"=100.00'

TOTAL LOTS 1

THIS PLAT RECORDED IN CABINET , SLIDE



SHEET 2 of 2
 DATE: 09-15-02
 SCALE: 1" = 100.0'
 0 50 100 200
 GRAPHIC SCALE IN FEET
 T-100

PRELIMINARY

BLOCK 1
 VOLUME 658-02, PAGE 20,
 A.L.T. 8, 1074

FORT WORTH & DENVER RY. CO.
 VOLUME 305, PAGE 400, AND
 VOLUME 305, PAGE 780

GRONELL COOP.
 VOLUME 302,
 PAGE 092,
 NOV. 11, 1903

LASKO INDUSTRIAL ADDITION
 147,587 SQ.FT.
 37.818 AC.

177 SQ. FT.
 VOLUME 658-02, PAGE 40
 DECEMBER 21, 1971

JOHN BURSEY SURVEY
 VOLUME 170, PAGE 042
 34,477.36' S
 54,477.36' S

W.B. TUCKER SURVEY
 CABINET & HANGER 285
 NOV. 17, 1903

F.W. & D.C.R.R.
 POINT OF BEGINNING
 100.00'

MEACHAM BLVD.

177 SQ. FT.
 VOLUME 658-02, PAGE 40
 DECEMBER 21, 1971

MINEOLA AVENUE
 BLOCK 67

HARDBY STREET

HARDBY STREET

WEBER STREET

DE RIDDER AVENUE

BLOCK 42

BLOCK 43

BLOCK 44

BLOCK 45

BLOCK 46

BLOCK 47

BLOCK 48

BLOCK 49

BLOCK 50

BLOCK 51

BLOCK 52

BLOCK 53

BLOCK 54

BLOCK 55

BLOCK 56

BLOCK 57

BLOCK 58

BLOCK 59

BLOCK 60

BLOCK 61

BLOCK 62

BLOCK 63

BLOCK 64

BLOCK 65

BLOCK 66

BLOCK 67

BLOCK 68

BLOCK 69

BLOCK 70

BLOCK 71

BLOCK 72

BLOCK 73

BLOCK 74

BLOCK 75

BLOCK 76

BLOCK 77

BLOCK 78

BLOCK 79

BLOCK 80

BLOCK 81

BLOCK 82

BLOCK 83

BLOCK 84

BLOCK 85

BLOCK 86

BLOCK 87

BLOCK 88

BLOCK 89

BLOCK 90

BLOCK 91

BLOCK 92

BLOCK 93

BLOCK 94

BLOCK 95

BLOCK 96

BLOCK 97

BLOCK 98

BLOCK 99

BLOCK 100

