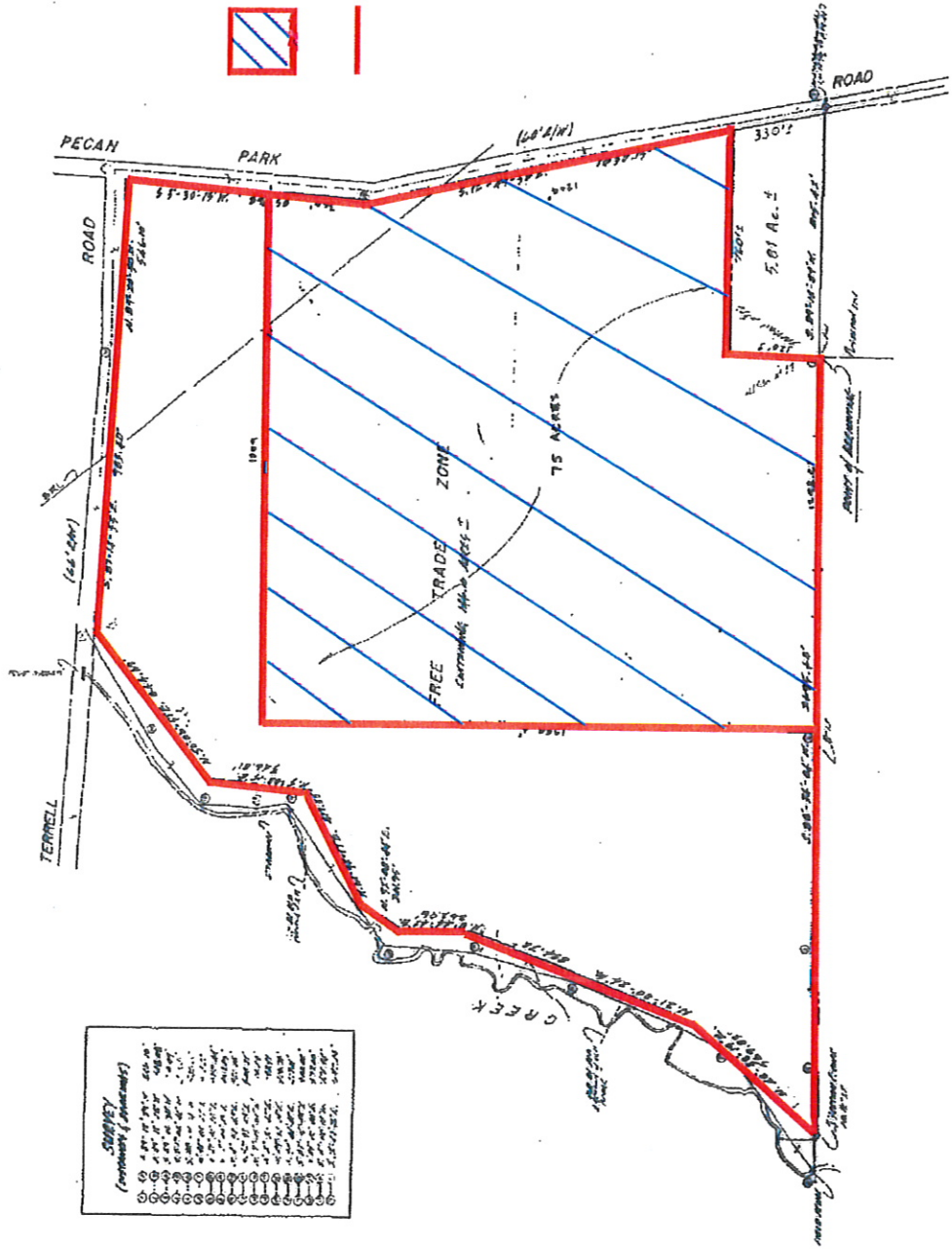


Site 1 - Jacksonville International Airport

MAP SHOWING SURVEY OF
PART OF SECTIONS 26 & 27
TOWNSHIP 1 NORTH, RANGE 26 EAST,
DUVAL COUNTY, FLORIDA
(FOR REAL ESTATE DIV.)



SURVEY
(Continuation of Subdivisions)

1	100' x 100'
2	100' x 100'
3	100' x 100'
4	100' x 100'
5	100' x 100'
6	100' x 100'
7	100' x 100'
8	100' x 100'
9	100' x 100'
10	100' x 100'
11	100' x 100'
12	100' x 100'
13	100' x 100'
14	100' x 100'
15	100' x 100'
16	100' x 100'
17	100' x 100'
18	100' x 100'
19	100' x 100'
20	100' x 100'
21	100' x 100'
22	100' x 100'
23	100' x 100'
24	100' x 100'
25	100' x 100'
26	100' x 100'
27	100' x 100'
28	100' x 100'
29	100' x 100'
30	100' x 100'
31	100' x 100'
32	100' x 100'
33	100' x 100'
34	100' x 100'
35	100' x 100'
36	100' x 100'
37	100' x 100'
38	100' x 100'
39	100' x 100'
40	100' x 100'
41	100' x 100'
42	100' x 100'
43	100' x 100'
44	100' x 100'
45	100' x 100'
46	100' x 100'
47	100' x 100'
48	100' x 100'
49	100' x 100'
50	100' x 100'

CITY OF JACKSONVILLE DEPARTMENT OF PUBLIC WORKS ENGINEERING DIVISION	
DRAWN BY: [Name]	DATE: [Date]
CHECKED BY: [Name]	DATE: [Date]
SURVEY BOOK: [Number]	PAGE: [Page]
SHEET: [Number]	OF [Total] SHEETS
SCALE: [Scale]	
PROJECT: [Project Name]	

PL 10 11/24