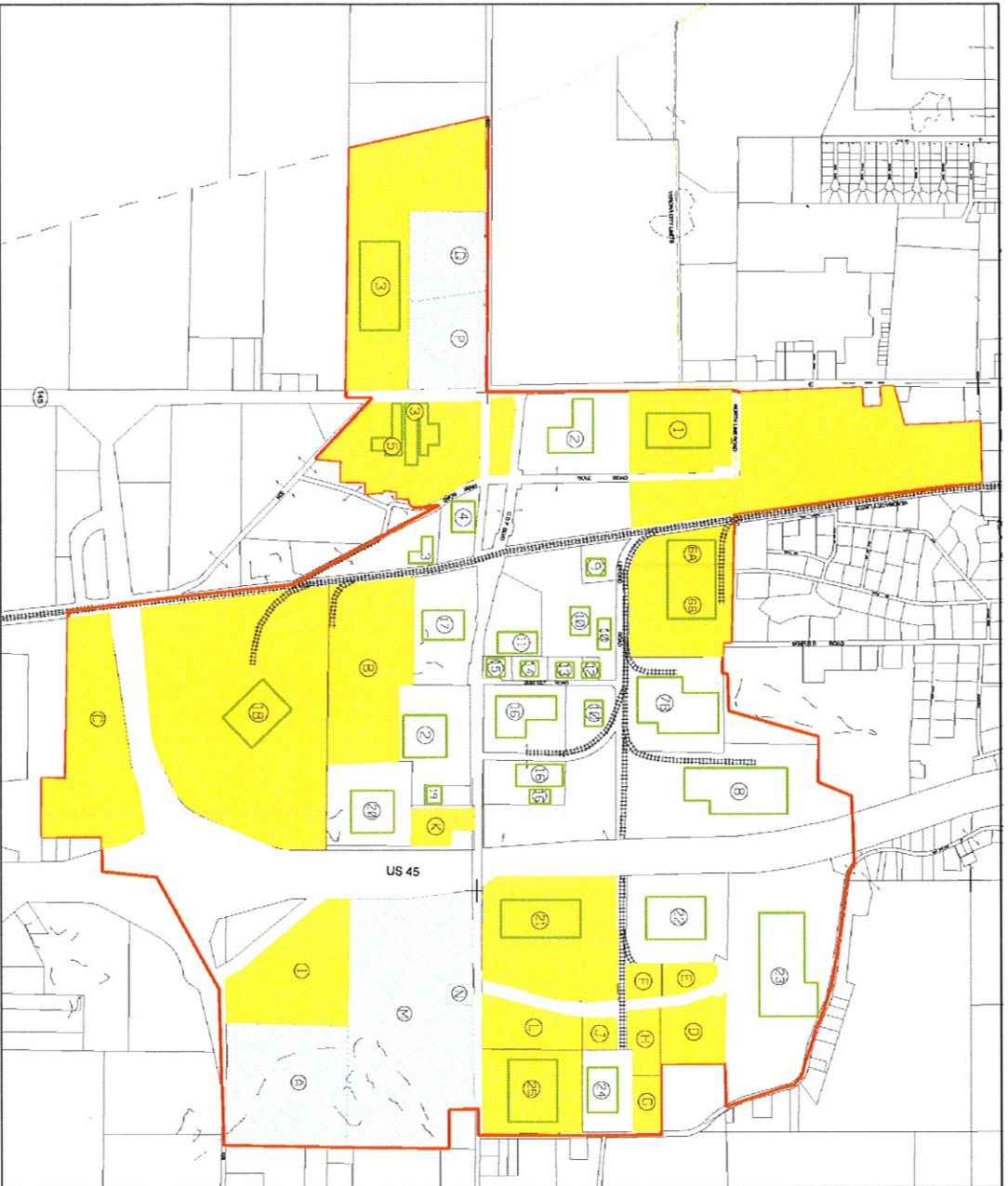


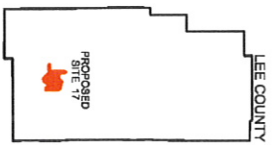
TUPELO INDUSTRIAL PARK SOUTH GENERAL PURPOSE AREA



LEE COUNTY  
PROPOSED SITE 17



COMMUNITY DEVELOPMENT FOUNDATION  
300 WEST MAIN STREET, P.O. BOX A  
TUPELO, MISSISSIPPI 38802-1210  
TOLL FREE: 800.523.3463 PHONE: 662.842.4521  
FAX: 662.841.0883 EMAIL: INFO@CDFMS.ORG  
WEBSITE: WWW.CDFMS.ORG



LEGEND:  
 GENERAL PURPOSE ZONE BOUNDARY  
 EXISTING FACILITIES ACREAGE

1. LANE FURNITURE INDUSTRIES/ 90.9 ACRES
2. TEJUNSEH/ 62.8 ACRES
3. MTD PRODUCTS/ 78.8 ACRES
4. AARC/ 8.5 ACRES
5. ELIER FURNITURE/ 78.0 ACRES
- 6A. DAY'S INTERNATIONAL/ 67.0 ACRES
- 6B. ADVANCED INNOVATIONS LLC/ 18.0 ACRES
7. FOAMEX WEST/ 23.0 ACRES
8. CARPENTER COMPANY/ 55.6 ACRES
9. TOMBIGEE ELECTRIC SUB STATION/ 4.0 ACRES
10. STYLELINE FURNITURE/ 29.7 ACRES
11. KOB ENTERPRISES/ 12.3 ACRES
12. MSC INDUSTRIAL/ 1.0 ACRES
13. QUAKER FABRICS/ 2.0 ACRES
14. TUPELO WILBERT BURIAL VAULT CO./ 20.0 ACRES
16. SCHWAN'S ENTERPRISES, INC./ 1.8 ACRES
17. GENERAL ALUMINUM METALLOY/ 18.1 ACRES
18. HICKORY SPRINGS/ 46.0 ACRES
19. CHILD CARE CENTER/ 2.3 ACRES
20. THYSSENKRUPP FABCO/ 18.5 ACRES
21. HUNTER DOUGLAS/ 39.8 ACRES
22. FOAMEX EAST/ 24.09 ACRES
23. SOUTHERN FAMILY FOODS, LLC/ 58.5 ACRES
24. HENRIGE BAGS/ 10.4 ACRES
25. LANE DIST. CENTER/ 20.0 AC

TOTAL INDUSTRIAL ACREAGE: 778.28 ACRES

AVAILABLE SITES/ ACREAGE

- A. MA. & JANIE STACY/ 98 ACRES
- B. CDF/ 28.39 ACRES
- C. CDF/ 39.7 ACRES
- D. CDF/ 10.18 ACRES
- E. CDF/ 14.08 ACRES
- F. CDF/ 25.85 ACRES
- G. CDF/ 14.17 ACRES
- H. CDF/ 15.04 ACRES
- I. CDF/ 28.5 ACRES
- J. CDF/ 3.30 ACRES
- K. CDF/ 6.20 ACRES
- L. CDF/ 9.35 ACRES
- M. WILLIAM WANGCASTER/ 78.8 ACRES
- P. NETTIE COBB/ 14.9 ACRES
- Q. KEVIN PANNELL/ 14.1 ACRES

TOTAL AVAILABLE ACREAGE: 287.64 ACRES